

## Pace Print Client: Download and Installation (Windows)

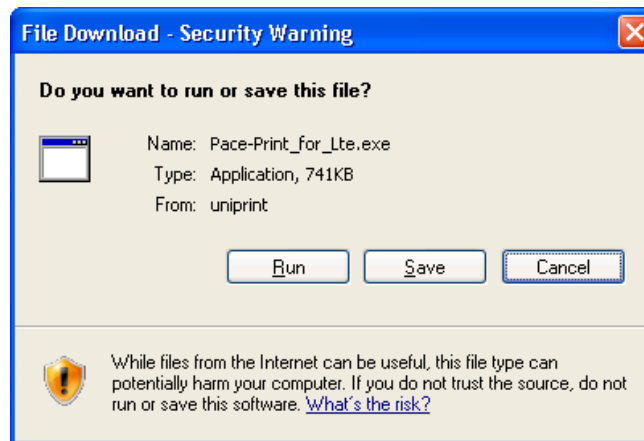
### Introduction

Pace University provides the capabilities to print from any remote location. Users can easily send printable documentation to one print queue and pick up from any designated location. In order to begin using these features the Print Client is needed.

**Note:** Users must be connected to the Pace Network. If you are not on a Pace campus, click on the following link for directions on how to connect to the Pace Network: [Installing & Connecting to the VPN](http://www.pace.edu/doingit/WFO/pdf/VPNLabDocument101508.pdf) <http://www.pace.edu/doingit/WFO/pdf/VPNLabDocument101508.pdf>

To download and install the Print Client:

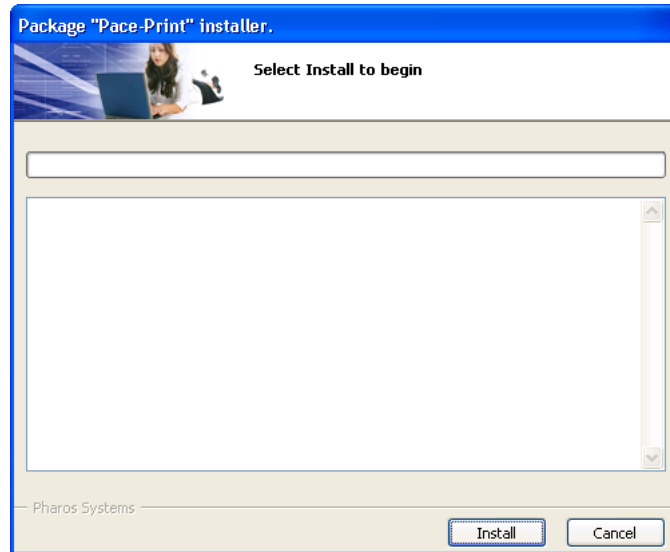
- go to [Printing Client Download](http://www.pace.edu/printing) (<http://www.pace.edu/printing>)
- click **Print Client**



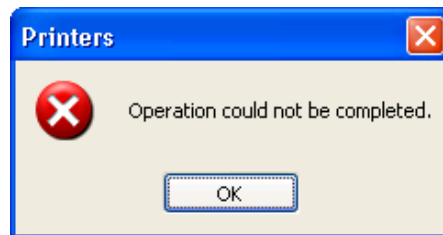
- click **Run**




- click **Install**



At the end of the installation process the following message appears, “Operation could not be completed”. This message is not an error.



- click **OK** to continue
- click **Finish**

Once the **Pace Print Client** has been installed successfully, **Pace Print**  **Pace Print**   
 0   
 Ready will appear as a selection of available printers.