



MODEL 7151 / AGES 13+ / 39 MPH MAX SPEED

7151 150cc FUN KART OWNER'S MANUAL / PARTS GUIDE

15516R1

THIS VEHICLE IS FOR OFF-ROAD USE ONLY THIS VEHICLE IS NOT DESIGNED FOR USE ON RENTAL TRACKS OR RACING

BEFORE OPERATING THIS VEHICLE, THE OWNER AND EACH OPERATOR MUST UNDERSTAND THIS VEHICLE WAS NOT DESIGNED OR MANUFACTURED TO MEET SPECIFICATIONS FOR USE ON PUBLIC ROADS, STREETS, HIGHWAYS AND THOROUGHFARES. THE OWNER AND EACH OPERATOR MUST READ AND UNDERSTAND ALL THE INSTRUCTIONS FOR PROPER ASSEMBLY AND SAFE OPERATION, AS WELL AS THE INSTRUCTIONS CONCERNING THE ENGINE AND ALL OTHER PORTIONS OF THE VEHICLE. CHILDREN MUST BE 13+ YEARS OF AGE FOR THIS VEHICLE AND SUPERVISED BY AN ADULT AT ALL TIMES WHEN USING THIS FUN KART. SPEED REDUCTION KITS ARE AVAILABLE FOR ALL VEHICLES. THIS VEHICLE IS NOT A TOY.

EMISSION CONTROL SYSTEM WARRANTY STATEMENT FOR 150cc ENGINES

Your warranty rights and obligations

The U.S. Environmental Protection Agency and Geason Enterprises, LLC dba Geason Powersports (hereinafter "Geason Powersports") are pleased to explain the emission control system warranty on your 2013 Off-Road ATV. New off-road motor vehicles must be designed, built and equipped to meet U.S. EPA Federal anti-smog standards. Geason Powersports must warrant the emission control system on your vehicle for 5,000 km, or at least 30 months, whichever comes first, provided that there has been no abuse, neglect or improper maintenance of your vehicle. This ATV was designed to meet the emission standards for 10,000 km, or five years, whichever comes first. Your emission control system may include parts such as the carburetor or fuel injection system, the ignition system, catalytic converter and engine computer, if it is equipped. Also included may be hoses, belts, connectors and other emission-related assemblies. Where a warrantable condition exists, Geason Powersports will repair your vehicle at no cost to you, including diagnosis, parts and labor. If an emission-related part on your vehicle is defective, the part will be repaired or replaced by Geason Powersports. This is your emission control system DEFECTS WARRANTY.

NOTICE! Use of any Geason Powersports vehicle in any type of competitive event completely and absolutely voids this and all other warranties offered by Geason Powersports.

Owner's warranty responsibilities

As the vehicle owner, you are responsible for the performance of the required maintenance listed in your owner's manual. Geason Powersports recommend that you retain all receipts covering maintenance on your vehicle, but Geason Powersports cannot deny warranty solely for the lack of receipts or for your failure to ensure the performance of all scheduled maintenance. You are responsible for presenting your vehicle to the Geason Powersports dealer as soon as a problem exists. The warranty repairs should be completed in a reasonable amount of time, not to exceed 30 days. As the vehicle owner, you should be aware that Geason Powersports may deny your warranty coverage if your vehicle or a part has failed due to abuse, neglect, improper maintenance or unapproved modifications. If you use your vehicle in any type of competitive event, this warranty is immediately and completely void. If you have any questions regarding your warranty rights and responsibilities, you should contact:

Geason Enterprises, LLC
dba Geason Powersports
1200 Lakeside Parkway #400
Flower Mound, TX 75028
Phone: 214-513-1700
Fax: 214-513-1711

or the

U.S. Environmental Protection Agency
2000 Traverwood Drive
Ann Arbor, MI 48105

Your warranty rights and obligations

Geason Enterprises, LLC dba Geason Powersports (hereinafter "Geason Powersports") warrants that each new 2013 and later Geason Powersports off-road vehicle:

A. is designed, built and equipped so as to conform at the time of initial retail purchase with all applicable regulations of the United States Environmental Protection Agency, and;

B. is free from defects in material and workmanship which cause such vehicle to fail to conform to applicable regulations of the United States Environmental Protection Agency for the periods specified above.

I. Coverage. Warranty defects shall be remedied during customary business hours at any authorized Geason Powersports dealer located within the United States of America in compliance with the Clean Air Act and applicable regulations of the United States Environmental Protection Agency. Any part or parts replaced under this warranty shall become the property of Geason Powersports.

II. Limitations This Emission Control System Warranty shall not cover any of the following:

A: Repair or replacement as a result of

- (1) accident,
- (2) misuse,
- (3) repairs improperly performed or replacements improperly installed,
- (4) use of replacement parts or accessories not conforming to specifications set forth by Geason Powersports, which adversely affect performance and/or
- (5) use in competitive racing or related events.

B: Inspections, replacement of parts and other services and adjustments required for required maintenance.

C: Any vehicle equipped with an odometer or hour meter on which the odometer mileage or hour meter reading has been changed so that actual mileage cannot be readily determined.

III. Limited Liability

A. The liability of Geason Powersports under this Emission Control System Warranty is limited solely to the remedying of defects in material or workmanship by an authorized Geason Powersports dealer at its place of business during customary business hours. This warranty does not cover inconvenience or loss of use of the vehicle or transportation of the vehicle to or from the Geason Powersports. Geason Powersports shall not be liable for any other expenses, loss or damage, whether direct, incidental, consequential or exemplary arising in connection with the sale or use of or inability to use the Geason Powersports vehicle for any purpose. Some states do not allow the exclusion or limitation of any incidental or consequential damages, so the above limitations may not apply to you.

B. No express emission control system warranty is given by Geason Powersports, except as specifically set forth herein. Any emission control system warranty implied by law, including any warranty of mechanability or fitness for a particular purpose, is limited to the express emission control system warranty terms stated in this warranty. The foregoing statements of warranty are exclusive and in lieu of all other remedies. Some states do not allow limitations on how long an implied warranty lasts, so the above limitations may not apply to you.

C. No dealer is authorized to modify this Limited Emission Control System Warranty issued by Geason Powersports.

IV. LEGAL RIGHTS. This warranty gives you specific legal rights, and you may also have other rights which vary from state to state.

V. This warranty is in addition to the Geason Powersports limited vehicle warranty.

VI. ADDITIONAL INFORMATION. Any replacement part that is equivalent in performance and durability may be used in the performance of any maintenance or repairs. However, Geason Powersports are not liable for these parts. The owner is responsible for the performance of all required maintenance. Such maintenance may be performed at a service establishment or by any individual. The warranty period begins on the date the ATV is delivered to an ultimate purchaser.



Limited Warranty

American SportWorks (hereinafter referred to as “ASW”) hereby warrants to the original purchaser that the frame components of new ASW fun karts will be free from defects in material and workmanship. The period of warranty is thirty (30) days from date of purchase for the component parts (except as noted below), ninety (90) days from the date of purchase for the frame, and one (1) year from date of purchase on select engines. Some engines may carry a separate manufacturer’s warranty and are not covered by this ASW warranty. ASW, if notified of a defect in material or workmanship during the period of warranty, will repair or replace, at its option, defective parts at no charge, other than the reasonable cost for the transportation of the component(s). ASW will also agree to pay reasonable charges for labor, if necessary, to perform a warranty repair. Proof of Purchase must be provided to an approved ASW service center before any warranty work is performed.

The original purchaser must operate the vehicle and maintain the vehicle in accordance with the instructions provided in the Operator’s Manual, the supplements hereto, and labels affixed to the vehicle. Additionally, within (10) days of the discovery of an alleged defect, the original purchaser must contact ASW’s Customer Service Department at 1-800-643-7332, 4404 Engle Ridge Drive, Fort Wayne, IN 46804 or via the internet at www.amsportworks.com. The repair or replacement of any part or parts under this Limited Warranty shall not extend the term of the warranty beyond the original term as set forth above.

General Exclusions: This limited warranty does not cover component failure or damage caused by any of the following: abnormal strain or stress, neglect; abuse; improper assembly of components which were supplied in the factory sealed carton after the vehicle left ASW; improper maintenance, improper use of the vehicle, including, but not limited to racing, jumping, stunt driving, or any other uses prohibited by the Operator’s Manual. Additionally, this warranty does not cover component failure or damage to vehicles which are leased or rented, or vehicles which are used at a concession track.

Specific Exclusions: This limited warranty does not apply to components, which are subject to normal wear and tear. These items include, but are not limited to, the tires, brakes, throttle, shift and brake cables, drive belt, the torque converter system, chain, seat, lights, fasteners, decals, or cosmetic body panels and natural discoloration of material due to ultraviolet light. Downtime, pick-up and delivery charges are not covered by this warranty. This warranty does not apply to select engines covered by a separate manufacturer’s warranty.

ASW MAKES NO OTHER WARRANTY OF ANY KIND, EXPRESSED OR IMPLIED. ALL WARRANTIES OF MERCHANTABILITY AND FITNESS FOR A PARTICULAR PURPOSE WHICH EXCEED THE OBLIGATIONS AND TIME LIMITATIONS SPECIFIED IN THE WARRANTY ABOVE ARE HEREBY DISCLAIMED BY ASW AND EXCLUDED FROM THIS WARRANTY. ADDITIONALLY, THIS WARRANTY EXCLUDES ANY INCIDENTAL OR CONSEQUENTIAL DAMAGES, INCLUDING BUT NOT LIMITED TO LOSS OF USE. SOME STATES DO NOT ALLOW A MANUFACTURER TO EXCLUDE OR LIMIT INCIDENTAL OR CONSEQUENTIAL DAMAGES AND, THEREFORE, THE ABOVE EXCLUSION MAY NOT APPLY TO YOU.

SOME STATES DO NOT ALLOW LIMITATIONS ON HOW LONG AN IMPLIED WARRANTY WILL LAST. IT IS POSSIBLE THAT THE ABOVE LIMITATION MAY NOT APPLY TO YOU. THIS WARRANTY GIVES YOU SPECIFIC LEGAL RIGHTS, AND YOU MAY ALSO HAVE OTHER LEGAL RIGHTS, WHICH VARY, FROM STATE TO STATE.

VEHICLE IDENTIFICATION NUMBER

Record the Vehicle Identification Number (VIN) and Model number of your American SportWorks Fun Kart below for service and insurance records. The VIN can be found on the crossbar, behind the seat. The Model number is located on the SKU decal near the floorboard.

VIN

MODEL

TABLE OF CONTENTS

Emissions Warranty	i
ASW Limited Warranty	ii
SECTION 1 INTRODUCTION	
Forward	1
Emissions Warranty	1
Cell Phone Use	1
SECTION 2 OPERATION	
Kart Operation	2
Kart Features and Locations	4
SECTION 3 SERVICE	
Replacement Parts	5
Air Cleaner	5
Engine Lubrication	5
Spark Plug	6
Carburetor Adjustment	6
Cleaning Instructions	6
General Lubrication	6
Chain Lubrication & Adjustment	6
Shock Adjustment	7
Shifter Adjustment	7
Storage Instructions	7
SECTION 4 MAINTENANCE	
Wheel Replacement	8
Front Wheel Alignment	8
Optional Speed Reducer installation	8
Specifications and Electrical Schematic	9
SECTION 5 ILLUSTRATED PARTS LIST	
Cylinder Head Assembly	10
Cylinder	11
Engine Crankcase	12
Transmission	13
CVT Cover	14
Outer Crankcase Assembly	15
Piston, Crank & Connecting Rod	16
Camshaft Assembly	17
Oil Pump Assembly	18
Driven Pulley & Clutch	19
Engine Electrical	20
Electric Start	21
Driver Pulley	22
Fan Cover & Shroud Assembly	23
Carburetor	24
Frame Warning Labels	25
Frame Group	26, 27
Steering & Brakes	28
Front Suspension	29
Rear Swingarm Assembly	30
Engine / Muffler / Air Cleaner	31
Rear Axle	32
Electrical	33

FORWARD

Congratulations on the purchase of your American SportWorks / ASW Fun Kart. Please take a few moments to get well acquainted with your vehicle by reading the Operator Safety Manual as well as this Owners Manual / Parts Guide. Before operating this vehicle, the owner, and each operator, must understand that this vehicle was not designed or manufactured to meet specifications for use on public roads, streets, highways and thoroughfares. The owner, operator(s) and passenger(s) must read and understand all the instructions for proper assembly and safe operation, as well as the instructions concerning the engine and all other portions of the vehicle as described and illustrated in this manual, the Operator Safety Manual and on the included Kart Safety DVD. Children must be 13 years of age or older and supervised by an adult at all times when using the vehicle. This vehicle is not a toy.

Be sure to follow the recommended maintenance schedule and service your machine accordingly. Preventative maintenance is extremely important to the safe operation and longevity of your vehicle.

Inexperienced and first time drivers are urged to seek instruction from a dealer or qualified instructor before and during the initial use of this vehicle. It is also recommended to practice in a large open area to become familiar with the operation of the machine. This vehicle is designed for drivers and riders 13 years and older.

For more information on American Sportworks and its products visit our website at www.amsportworks.com.

New Vehicle Limited Warranty

For a detailed description of warranty coverage for your vehicle, refer to the Warranty section of the Owners Manual / Parts Guide as supplied with the vehicle, or go to www.amsportworks.com.

Emissions Warranty

For a detailed description of the emissions warranty for your vehicle, refer to the Emissions Warranty section of the Owners Manual / Parts Guide as supplied with the vehicle, or go to www.amsportworks.com.

Cell Phone Use

The use of Mobile Communications Equipment has become increasingly important and prevalent in both personal and business affairs. Drivers must not compromise their own, or others safety when using such equipment. ASW recommends against the use of any handheld device while driving this vehicle.

We hope you will have a fun, safe experience with our products and thank you again for choosing an American SportWorks Fun Machine.

Your vehicle has been supplied with:

- **OPERATOR SAFETY MANUAL (Book 1)**
- **OWNERS MANUAL / PARTS GUIDE (Book 2)**
- **KART SAFETY DVD**


If any of these items are missing or were not supplied with your vehicle, please contact American SportWorks at 800-643-7332 or visit our website at www.amsportworks.com.

safety section

SOME WORDS ABOUT SAFETY

Please thoroughly read and understand the Safety Section outlined in the Operator Safety Manual supplied with this Fun Kart along with the Kart Safety DVD. If, for some reason, you did not receive these items please contact American Sportworks or visit our website at www.amsportworks.com.

WARNINGS AND CAUTIONS

 This is the safety alert symbol. When you see this symbol on your machine or in this manual, be alert to the potential for personal injury.

Read and follow all instructions in the Operator Safety Manual, this manual and any accompanying manuals before attempting to operate this vehicle. Make sure to view the Kart Safety DVD.

WARNING

Indicates a potential hazard that could result in severe personal injury or death

CAUTION

Indicates a potential hazard which may result in personal injury or damage to the machine.

NOTE: Use of the word "NOTE" will alert you to key information or instructions.

KART OPERATION

A. Operation controls

⚠ WARNING

Do not attempt to start or operate the engine until completely familiar with the location and use of each control necessary to operate this vehicle. The operator must know how to stop this machine before starting and driving it.

B. Throttle

The right foot pedal is the throttle and controls the speed of the kart. As the engine speed increases above idle, the driver pulley automatically engages the drive belt and moves the vehicle forward. To disengage the driver pulley at any time, allow the throttle to return to the idle position.

⚠ WARNING

Every time, prior to starting the engine, check the throttle assembly to ensure that when the pedal is pushed all the way forward the assembly is working smoothly and returns to idle when released. Do not operate this unit if pedal or engine throttle linkage fail to return to the idle position. If unable to correct the problem through lubrication, adjustment or replacement of worn parts, contact your dealer for assistance.

C. Brake

The brake is controlled by the left foot pedal (See Figure below). Applying pressure to the pedal draws the brake pads against the brake disc at the rear axle and slows or stops the kart. The locking lever can be applied to act as a park brake and should remain applied during starting and engine warming (choke cycle). See I. Park Brake for more instruction.

D. Fuel Valve (see fig. D1)

The manual valve is mounted to the bottom of the fuel tank and provides the added feature of a “reserve” position which provides access to a reserve fuel supply allowing additional driving range to get to a fuel filling station should the main fuel supply be used completely.

NOTE: Turn fuel valve to OFF position during transport

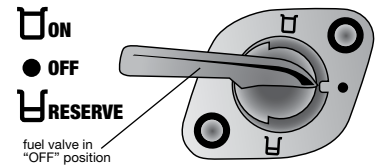


fig. D1

E. Engine Starting (see fig. E1)

For parental control and added security, this unit is equipped with a keyed ignition switch. To start the unit, ensure both Engine Stop Switches are in the RUN position. **(NOTE: Your Fun-Kart is equipped with (2) engine stop switches, one located on the dash and one located on the swing arm. BOTH switches must be in the “RUN” position for the engine to start.)** Place the unit in the NEUTRAL gear. Fasten seatbelt and place one foot on the brake pedal. Pump the throttle pedal several times to ensure that the pedal operates and returns smoothly. Apply choke by pulling out and holding the choke cable located under the driver’s seat. Turn ignition key fully clockwise and hold to start the engine. (Caution: Do not let the engine turn over for more than 5 seconds at a time as this may cause starter damage). Once the engine starts, allow the key to return to the run position. Adjust the choke by pushing it in slowly. If the engine starts to run rough, pull the choke control out slightly and then continue to push the choke control in after the engine can accept small applications of the gas pedal. Continue this process until the choke control is pushed all the way in (fully “OFF”). This may require a period of several seconds to several minutes, depending on the air temperature. Before driving this vehicle, test that the ignition switch will turn off the engine. With the engine running, turn the ignition key counter-clockwise to the “OFF” position to shut down the engine.

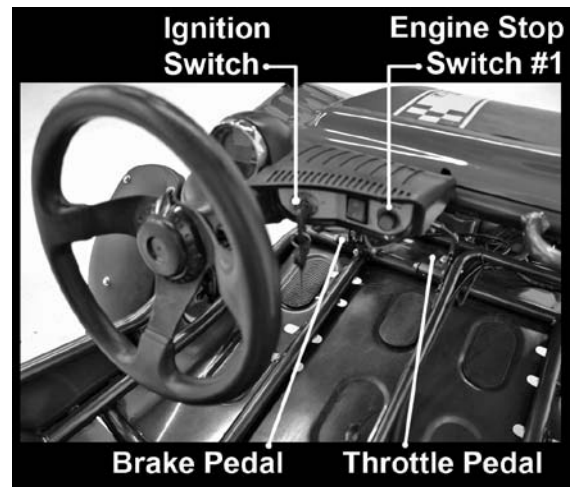


fig. E1

F. Engine Stop Switch (see fig. F1)

Before driving this vehicle, test each Engine Stop Switch to ensure that it is operating properly. With the engine running, switch the Engine Stop Switch to the STOP position to shut down the engine. (The STOP position may be identified on the switch by the word “STOP”, the word “OFF”, or the symbol “O”.) Repeat the process for the other Engine Stop Switch. With the engine running, turn the ignition key to the “OFF” position to shut down the engine.

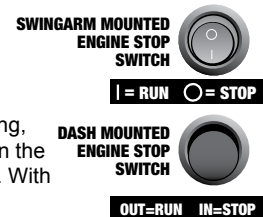


fig. F1

G. Seat Adjustment

The unit is equipped with an adjustable driver's seat. To adjust, lift the lever just in front of the seat bottom and move the seat either forward or backward. Release the lever at the desired seat location, ensuring that it snaps back into place to lock the seat in position.

⚠ WARNING

Never operate this vehicle when the seat is not securely locked into position. Serious injury or death could occur due to loss of control. Always make seat adjustments with the vehicle fully stopped and the engine shut off.

H. Occupant Restraints

This kart is equipped with 3 point retracting seat belts. Insert the metal tongue into the buckle until it is securely attached. Final adjustments should be made with the plastic tension stop such that the belt is against the shoulder and chest with no excess slack.

⚠ WARNING

Operating this kart without your seat belt could cause you to be thrown from the kart, causing serious injury or death.

I. Rear Cargo Rack

This kart is equipped with a rear cargo rack. The rack should be used for transporting small items, however, all items MUST be securely tied down with adequate straps or cords. Additionally, never exceed the rated load of 25lbs.

⚠ WARNING

Failure to properly tie down loose items and exceeding the maximum rating of the cargo rack may cause serious injury or death.

J. Gear Selection

This kart is equipped with a Drive / Neutral / Reverse transmission. To shift gears, bring the kart to a complete stop and let the engine RPM drop to the idle level. Move the shift lever to the desired gear and gently depress the throttle pedal.

⚠ CAUTION

Damage to the fun kart will occur if the unit is shifted into a different gear while the kart is still in motion. ALWAYS bring the vehicle to a complete stop before selecting a different gear.

K. Steering Adjustment (see fig. K1)

This kart is equipped with an adjustable tilt steering feature. To adjust, loosen the adjusting knob (A) until the steering column can move up and down. Select the appropriate setting and re-tighten the adjusting knob.

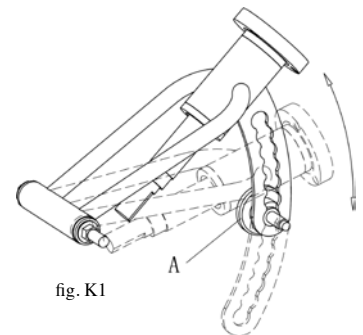


fig. K1

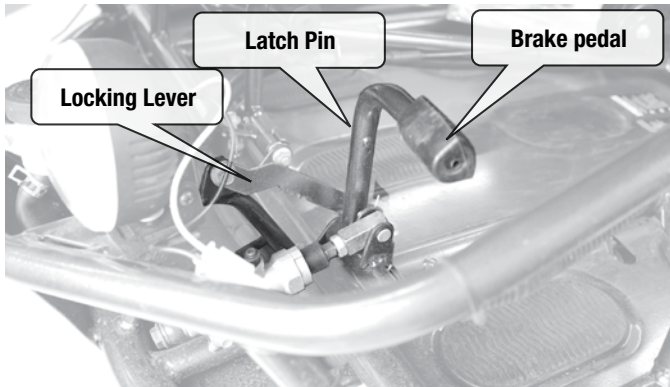
⚠ WARNING

Do not operate the vehicle without ensuring that the steering adjustment knob is securely tightened. Serious injury or death could occur due to loss of control or rollover.

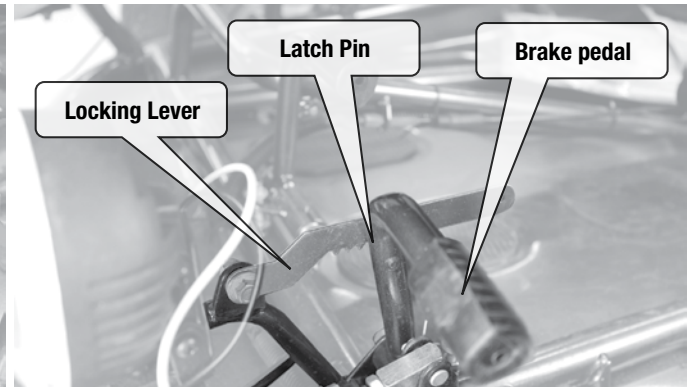
L. Park Brake (see fig. L1)

The park brake should be applied during starting, engine warming (choke cycle), and anytime the vehicle is parked and/or left unattended. The park brake is set by applying pressure to the brake pedal and latching the locking lever over the latch pin.

To apply the park brake fig. L1

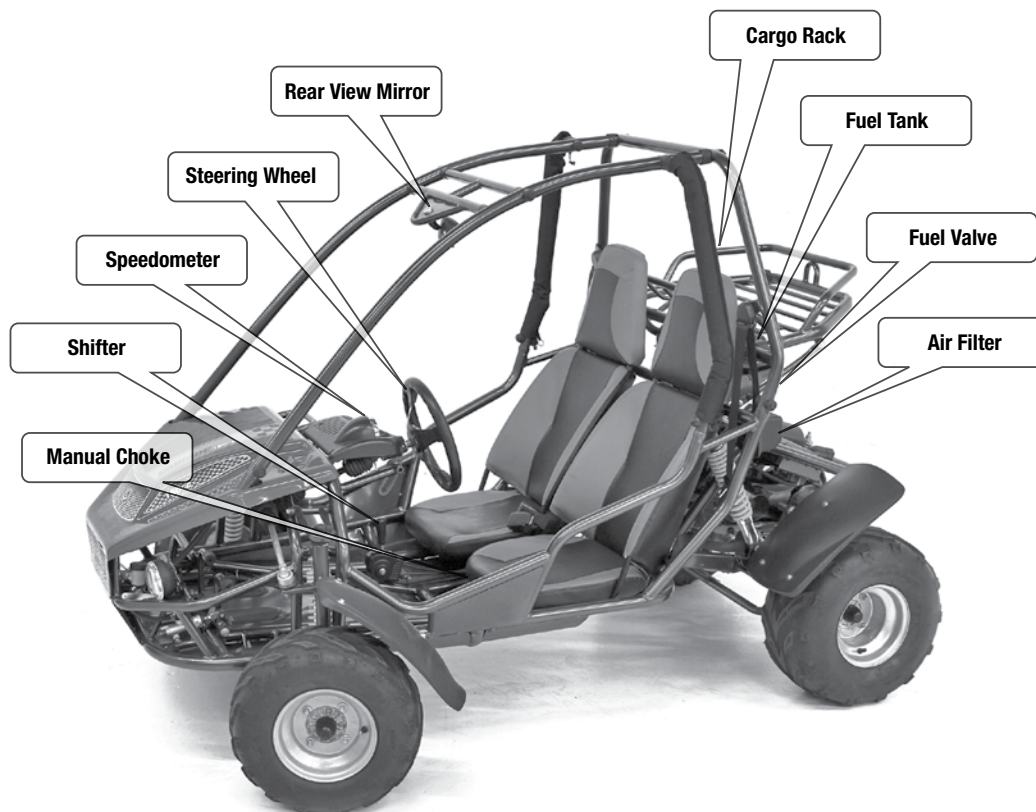


Parking brake not engaged



Parking brake engaged

KART FEATURES AND LOCATIONS



CAUTION

NEVER use E-15 or E-85 fuel or blends with Ethanol content in excess of 10%. Ethanol blends in excess of 10% will cause damage to the engine and void manufacturer warranty

- a. Use regular unleaded 87 octane gasoline with up to a 10% ethanol blend.
- b. This engine supplied with this Fun-Kart is NOT designed for Flex Fuel operation.

REPLACEMENT PARTS AND SERVICE

Most replacement parts are typically available from your dealer. Because of immediate availability and convenience, it is recommended that replacement parts be ordered from an authorized dealer. Take this manual and all supplements to the dealer when ordering parts in person.

If replacement parts are not available from a dealer, they may be ordered directly from American Sportworks by contacting ASW at 1-800-643-7332 or online at www.amsportworks.com. Orders may be subject to a minimum fee. A listing of authorized service center locations in your area is also available from our Customer Service department.

Record the Vehicle Identification Number (VIN) in the spaces provided at the front of this manual. The VIN can be found on the crossbar, behind the seat.

SERVICE

A. Air Cleaner *(see fig. A1)*

This unit is equipped with a paper style air filter element and should be replaced after every 20 hours of operation (Ref Figure).

NOTE: Operation in unusually dusty conditions may require more frequent replacement.

- 1) Remove the air cleaner cover (1) by removing the Phillips head screws.
- 2) Clean any excess dirt, oil, or dust from the air cleaner box with a mild detergent and water solution.
- 3) Thoroughly dry the air box
- 4) Replace the air cleaner element (2)
- 5) Carefully align the gasket between the air box halves during re-assembly

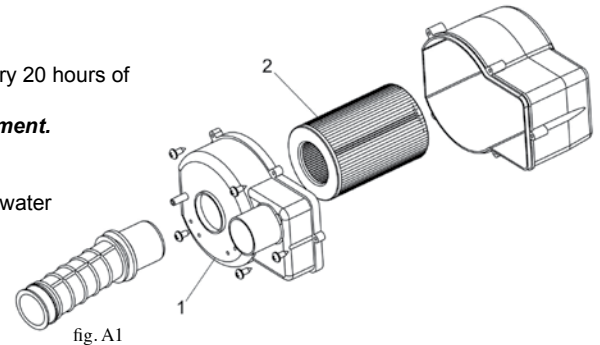


fig. A1

B. Engine Lubrication *(see fig. B1)*

You **MUST** change the oil in the crankcase after the first 5 hours of operating a new engine. The engine oil should then be changed every 20 hours of use thereafter. This will insure proper lubrication of the internal parts and prevent costly repairs due to excessive wear.

⚠ CAUTION

This unit has been shipped with special BREAK-IN oil pre-filled in the engine crankcase. This oil MUST be changed after 5 hours of operation. Replace with SAE 10W40 weight motor oil as described in the following section.

⚠ WARNING



Used oil MUST be disposed of at a proper collection center

- a. Remove the drain plug located on the bottom of the right rear side of engine. Elevating the front of the kart slightly will help drain all of the oil.
- b. The oil should be emptied into suitable container for recycling.
- c. Remove and clean the oil screen.
- d. With the oil completely drained, replace the drain plug and tighten securely.
- e. Place the kart back onto a flat surface to level the engine, and Re-fill the crankcase with 30oz of SAE 10W40 motor oil.
- f. Check the oil level using the dipstick attached to the oil plug cap. Be sure to check the oil level before each use of the kart. Add oil when necessary to keep the oil level between the bottom of the dipstick and the "O" mark.

NOTE: Oil level should be checked by dipping the oil level stick into the crankcase WITHOUT screwing the cap in.

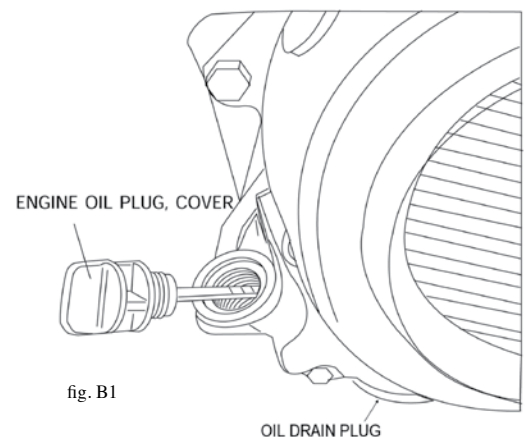
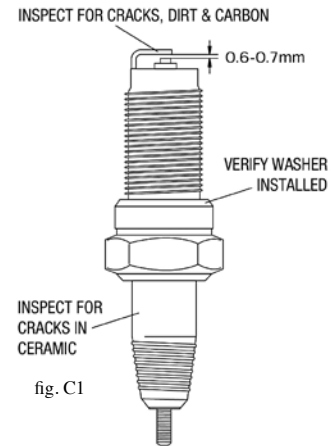


fig. B1

C. Spark Plug (see fig. C1)

- Remove the spark plug and inspect it each time you change the oil (Use a spark plug wrench). The electrodes should be kept clean and free of carbon. The presence of carbon or excess oil will greatly reduce engine performance. If possible, check the spark plug gap (area between the electrodes) using a wire feeler gage or spark plug gap tool.
- Correct gap is 0.6 - .07mm
- Before installing the spark plug, coat the threads lightly with graphite lubricant to ensure easier removal of the plug in the future.
- Spark plug should be replaced once a year for optimum engine performance.

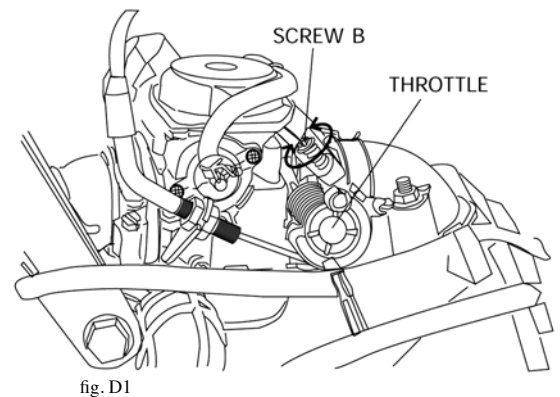


D. Carburetor Adjustment (see fig. D1)

All the necessary carburetor adjustments have been made at the factory, and the recommended settings are correct for most applications. To adjust the engine idle setting on the carburetor:

- Allow the engine to warm up for 5-10minutes
- Using a Phillips screwdriver, adjust the idle screw (B) until the engine settles at approximately 1400RPM

NOTE: For further carburetor adjustments, refer to the Service Manual available on our website at www.amsportworks.com, for purchase from your Dealer or by calling ASW's customer service.



E. Cleaning Instructions

Keep your kart clean by using a clean rag and a mild detergent and water solution. Wipe off all dirt and oil from around the controls. Wipe off any spilled fuel and oil. Keep the engine clean and clear of foreign objects, especially those around the air intake fan and air inlet ductwork.

F. General Lubrication

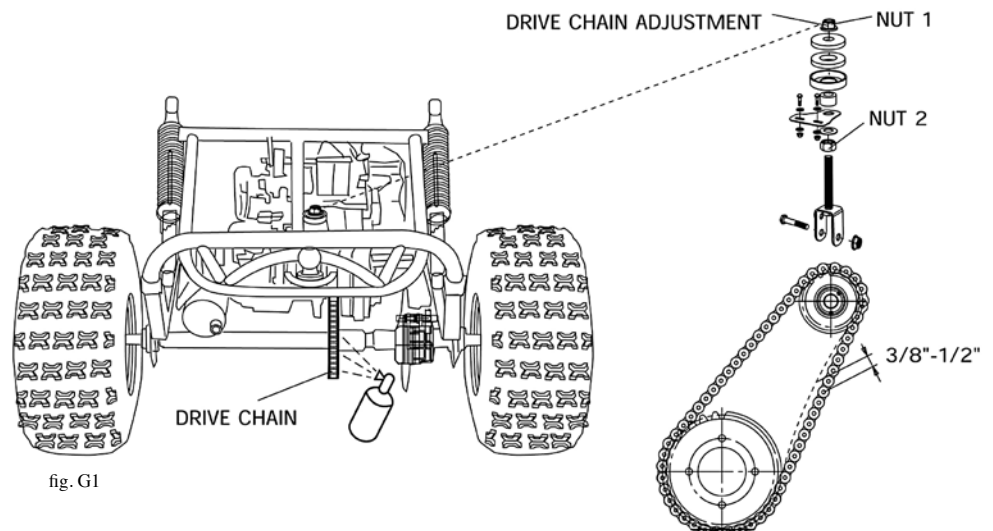
Lubricate the vehicle at least every 90 days, and more often, if the kart is used daily or in unusually dusty conditions. Lubrication of the front suspension should be performed by adding fresh axle grease, with a grease gun, to the fittings located on each A-Arm.

G. Chain Lubrication and Adjustment (see fig. G1)

For optimum chain life, regular lubrication with a spray on chain lubricant should be performed on a regular basis. (Ref Figure below)

A new chain will have initial stretch and therefore will require adjustment. The first chain adjustment should be made after the first 2 hours of use. If the chain has more than 1/2" of slack or "flex" then it will require adjustment. To adjust:

- Loosen Nut (1).
- Adjust nut (2) on the underside of the tube.
- Re-tighten Nut (1) until the proper chain tension is achieved.

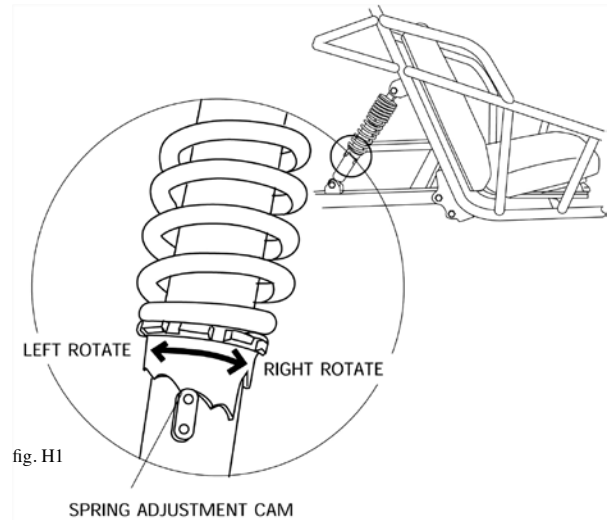


H. Adjustment of Front and Rear Shock (see fig. H1)

There are five adjustable positions on each shock. The center notch is the default position as set by the manufacturer (Ref Figure). Use a round nut wrench to adjust the shock.

To **INCREASE** the shock stiffness, rotate the ring to the highest (longest) setting.

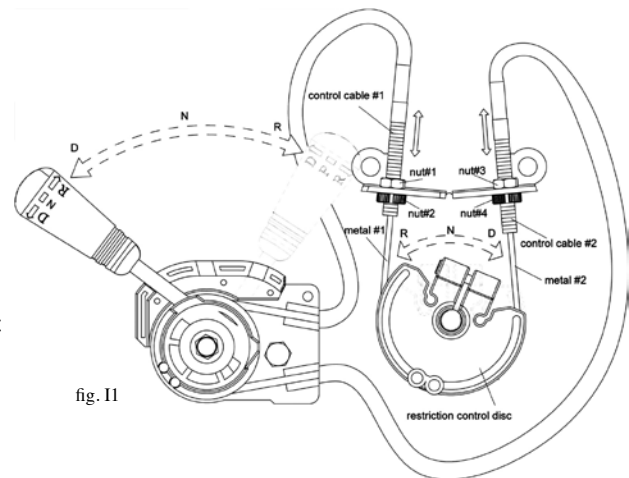
To **DECREASE** the shock stiffness, rotate the ring to the lowest (shortest) setting. Shock stiffness adjustments should be made based on the overall weight of the rider and occupant.



I. Shifter Adjustment (see fig. I1)

Your unit may require an occasional adjustment in the shift cables due to typical stretch found during normal operation of the kart. To make shift adjustments, ensure that engine is off and spark plug cap is removed. Refer to the following procedure:

- Push the shift lever to the "D" position
- Check the restriction control disc found just behind the oil level dipstick to ensure that it has rotated forward all the way (looking for any slack in control cable #1)
- Loosen adjustment nuts #1 and #2, pulling the housing to draw the cable tight. Re-tighten the nuts when the cable is properly tensioned.
- Shift the lever to the "R" position and check the control disc to ensure that it has rotated full towards the rear of the kart.
- Loosen adjustment nuts #3 and #4, pulling the cable housing to draw the #2 control cable tight.
- Re-tighten nuts #3 and #4 when the cable is properly tensioned.



J. Storage Instruction

If you plan to store (and not operate) your kart for a period in excess of 30 days, or at the end of each driving season, the unit should be set up for storage as follows:

- Drain fuel tank and carburetor by allowing the engine to run completely out of fuel.
- Lubricate the engine cylinder by removing the air cleaner and spraying an engine fogging oil through the carburetor.
- Do NOT save or store gasoline over the winter. Using old gasoline, which will deteriorate from storage, will make the engine difficult to start and affect the performance of the engine.
- Remove the battery from the unit and apply a periodic trickle charge to maintain the battery at a proper voltage level for the next riding season.
- To protect the paint, plastics and upholstery, it is a good idea to keep the unit covered when not in use.

⚠ CAUTION

If this unit is stored outside, the air box could collect rainwater. To prevent water from damaging the engine, any trapped water should be drained prior to each use by opening the drain tube located on the bottom side of the air box.

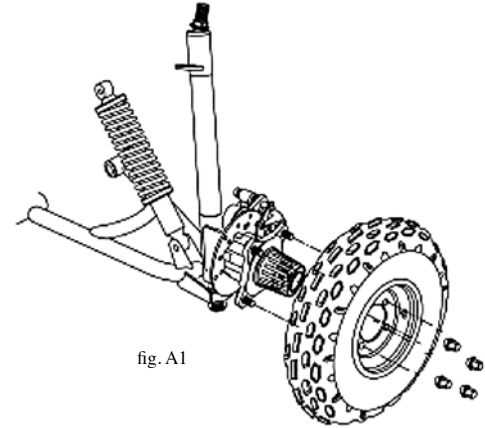
GENERAL MAINTENANCE

A. Front Wheel Replacement *(see fig. A1)*

Do not disassemble the castle nuts when you replace the front wheels. It is only necessary to remove the 4 lug nuts to remove the wheel. (See Figure) Tighten the nuts securely after replacing the wheels.

B. Rear Wheel Replacement *(see fig. A1)*

Do not disassemble the castle nuts when you replace the rear wheels. It is only necessary to remove the 4 lug nuts to remove the wheel. (See Figure) Tighten the nuts after replacing the wheels.



C. Front Wheel Alignment *(see fig. C1)*

The front wheels should be set with a “toe-in” from 1/8” to 1/4”. At the centerline of the tires, measure the Distance A and the Distance B. For proper toe adjustment, Dimension A should be 1/8” – 1/4” greater than Dimension B.

To make adjustments:

- Loosen the lock nuts on both sides of Front Tie Rods.
- Ensure the steering wheel is centered, and adjust Dimension B by equally rotating the tie rods in or out with a 12mm wrench.
- After adjusting to the desired length, tighten the lock nut against the rod end.
- Recheck the dimensions for proper alignment.

D. Optional Speed Reduction Installation *(see fig. D1)*

This kart has been equipped with provision for a speed limiter to reduce the overall speed of the unit to 20mph max. This kit is available from your dealer or directly from American SportWorks by calling customer service.

To install the speed limiter:

- Remove the electrical control box cover located on the rear swing arm, just next to the air box, using a Phillips screwdriver.
- Locate the CDI (black box with 2 wire plugs)
- Unplug the old CDI and replace with the new Rev Limited CDI provided in the kit.
- Replace the electrical box cover, being careful not to damage or crush any wires and connections.

NOTE: Keep the original CDI so that the kart can be changed back to the original factory setting if desired.

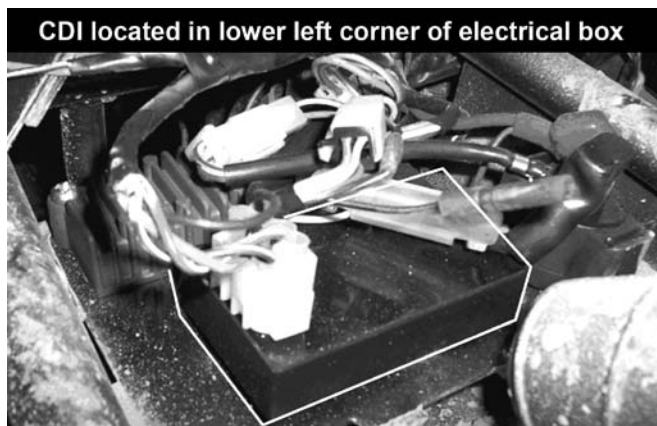


fig. D1

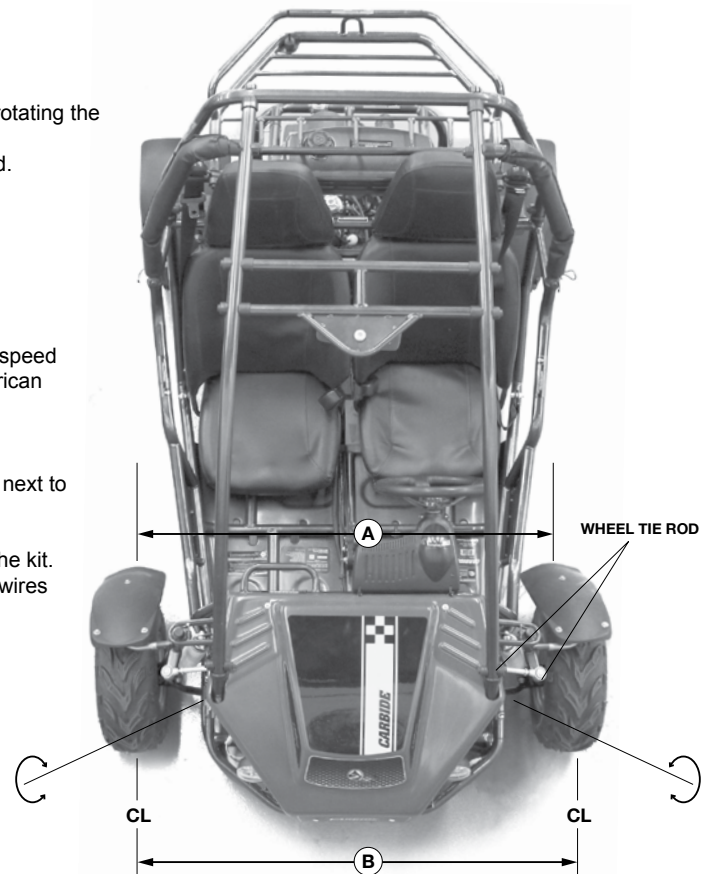


fig. C1 Toe Adjustment Diagram

CAUTION

Prevailing torque type locknuts must be replaced with new after the old locknuts are removed.

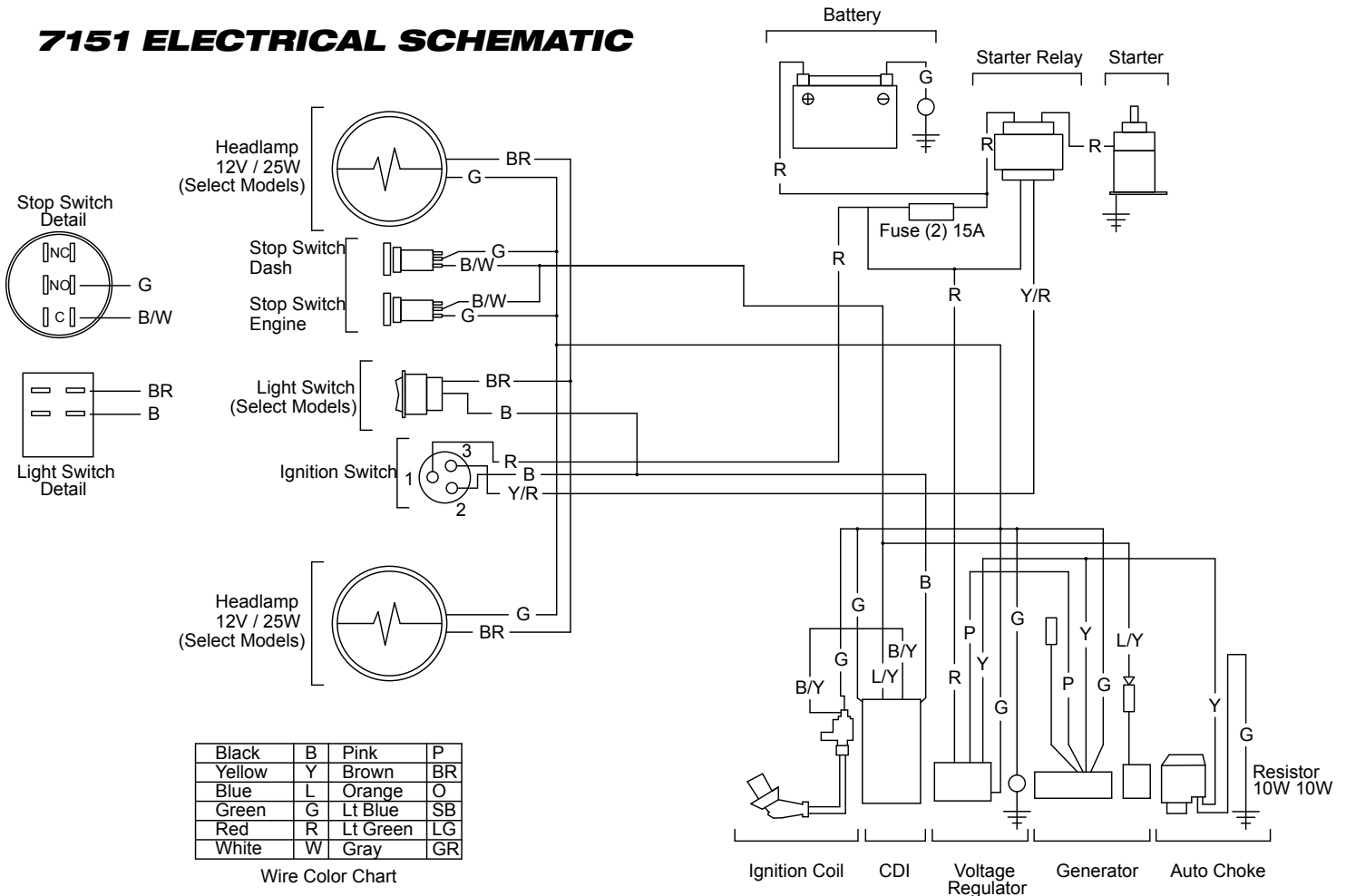


7151 SPECIFICATIONS

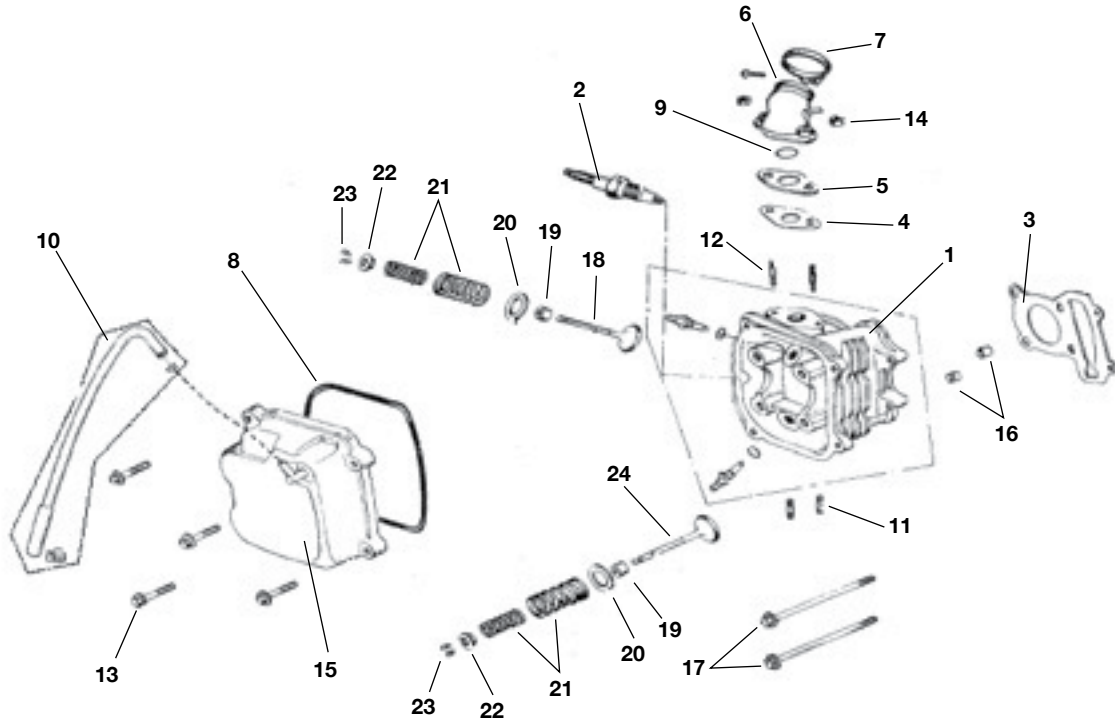
ENGINE	
Type	Single Cylinder, 150cc, Air Cooled, 4 cycle
Power (BHP @ RPM)	≈ 9.0 @ 7500
Torque (Ft-lbs @ RPM)	≈ 13.0 @ 5500
Starting System	Keyed Electric / CDI
Air Filtration	Single Element
Exhaust System	Muffler with Heat Shield
Fuel Capacity	1.75 gal
Oil Capacity	30 oz. 10W40
Spark Plug	NGK C7HSA
TRANSMISSION	
Type: Dual Wheel Drive	CVT Automatic with Reverse
CHAIN SIZE	
	#50 5/8" Pitch
TIRES & WHEELS	
Front	17 x 7 - 8 @ 15 p.s.i.
Rear	18 x 9.5 - 8 @ 15 p.s.i.
ADVANCED GEOMETRY SUSPENSION	
Front	Double A-Arm with Adjustable Coil Over Damped Shocks
Rear	Swing Arm with Adjustable Coil Over Damped Shocks
STEERING	
Type:	Rack and Pinion

FRAME	
Type - Heavy Gauge - Jig Welded	1.25" Main Frame
Rear Axle	1.25" Hardened Alloy Steel
Finish	Baked Powder Coat
BRAKES	
Type: Rear	8.75" Hydraulic Disc with Parking Brake
PERFORMANCE	
Max Speed Approx.	Up to 39 mph (optional speed reducer available - 20 mph)
Fuel Consumption	Up to 50 mpg
SPECIAL FEATURES	
Adjustable slide bucket driver seat, fixed bucket passenger seat, 3 point shoulder/lap belts with retractor, dual engine stop switch, 1-1/4" full brush bars, steerable front fenders, rear fenders, dual quartz halogen running lights, rear cargo rack, rear view mirror, speedometer, odometer, tilt wheel steering, plastic hood, whip flag, compliant to ASTM F2011. *20 mph speed reduction kit available (P/N 14572). Available mesh sun top.	
DIMENSIONS	
Curb Weight	475 lbs.
Maximum Rider Weight	400 lbs.
Seat To Pedals	34" - 39"
Wheelbase	60"
Vehicle - Overall	83.2"L x 53.4"W x 53.75"H
Climbing Angle	20 - 25°

7151 ELECTRICAL SCHEMATIC



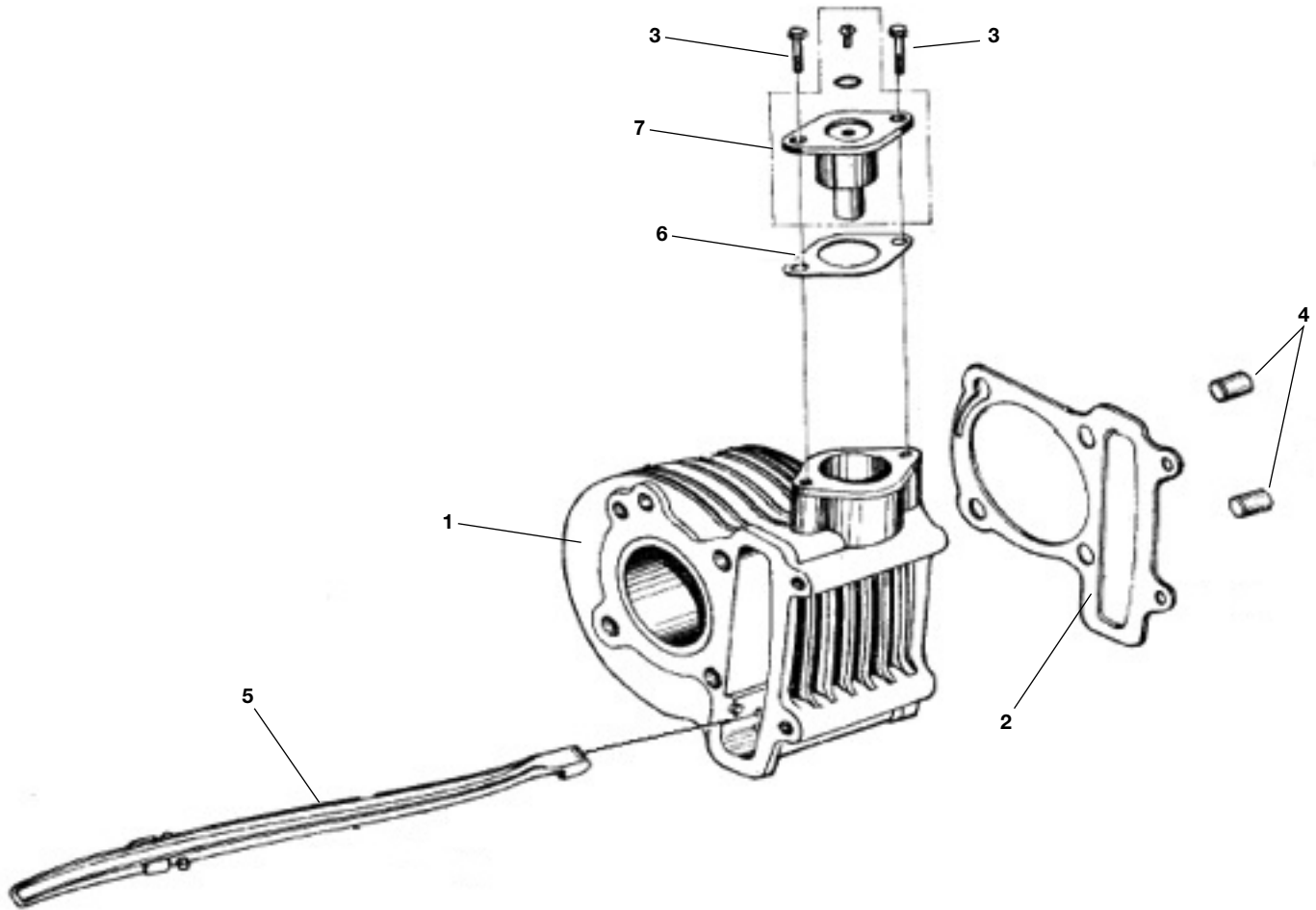
7151 SECTION 1 CYLINDER HEAD ASSEMBLY



Ref#	Part#	Description	Qty
1	14254	HEAD, CYLINDER - 150CC	1
2	50304	SPARK PLUG (CR7HSA)	1
3	14255	GASKET, CYL HEAD - 150CC	1
4	14256	GASKET, CARB INSULATOR - 150CC	1
5	14257	INSULATOR, CARB - 150CC	1
6	14258	MANIFOLD, INTAKE - 150CC	1
7	14259	CLAMP, CARB HOSE - 150CC	1
8	14260	GASKET, VALVE COVER - 150CC	1
9	14261	O-RING, M27 X 2 RUBBER - 150CC	1
10	14262	TUBE, BREATHER - 150CC	1
11	14263	STUD, M6 X 1.25 X 18	2
12	14264	STUD, M6 X 1.25 X 50	2

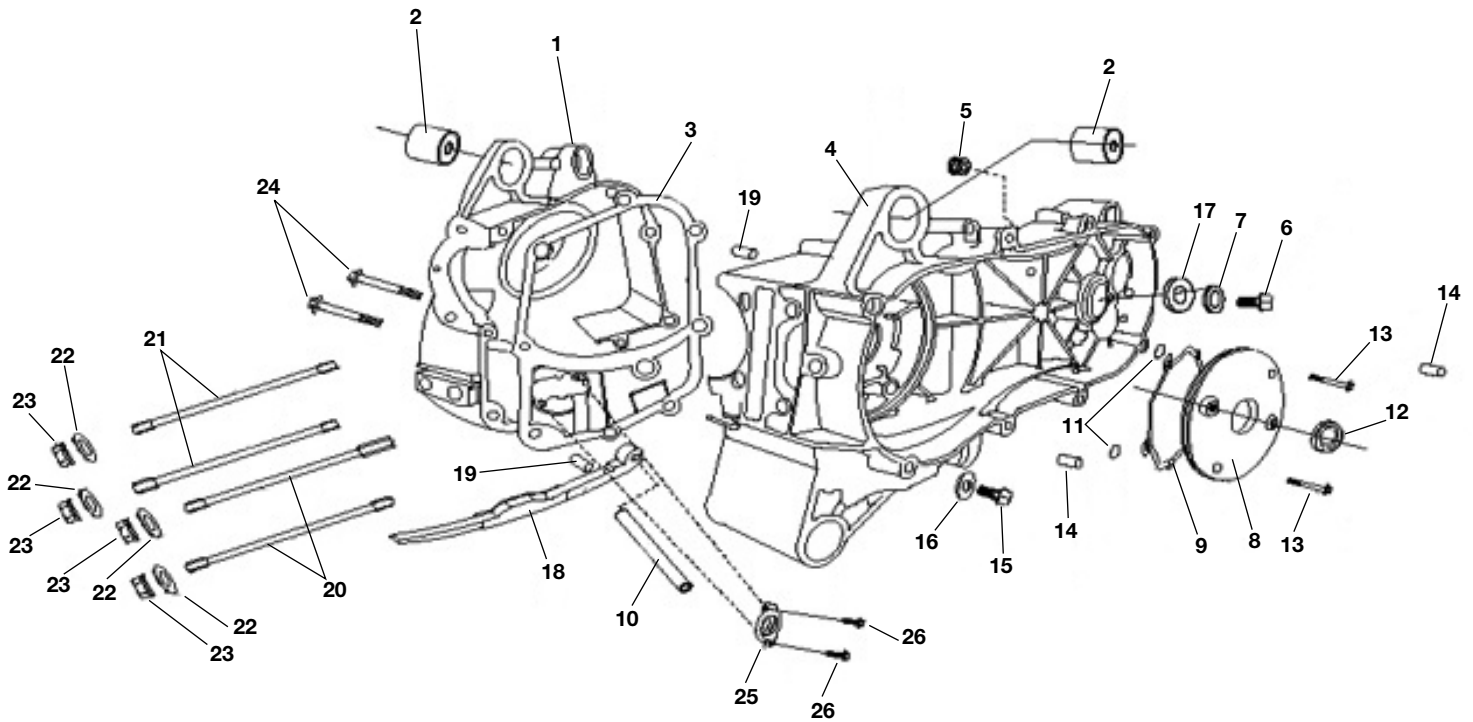
Ref#	Part#	Description	Qty
13	50003	BOLT, M6 x 1.00 x 25 HHF	4
14	50024	NUT, M6 x 1.00 HEX FLANGE	2
15	14265	COVER, VALVE - 150CC	1
16	14266	PIN, M10 X 16 DOWEL	2
17	50087	BOLT FLANGE SH 6 X 100	2
18	14267	VALVE, INTAKE - 150CC	1
19	14268	SEAL, VALVE STEM - 150CC	2
20	14269	SEAT, VALVE SPRING OUTER - 150CC	2
21	14270	SPRING, OUTER AND INNER VALVE - 150CC	2
22	14271	RETAINER, VALVE SPRING - 150CC	2
23	14272	KEEPER, VALVE SPRING - 150CC	4
24	14273	VALVE, EXHAUST - 150CC	1

7151 SECTION 2 CYLINDER



Ref#	Part#	Description	Qty
1	14317	CYLINDER - 150CC	1
2	14582	GASKET, CYLINDER BASE - 150CC	1
3	50032	BOLT FLANGE SH 6 X 22	2
4	14266	PIN, M10 X 16 DOWEL	2
5	14276	GUIDE, CAM CHAIN - 150CC	2
6	14275	GASKET, CAM CHAIN TENSIONER - 150CC	1
7	14274	ASM, CAM CHAIN TENSIONER - 150CC	1

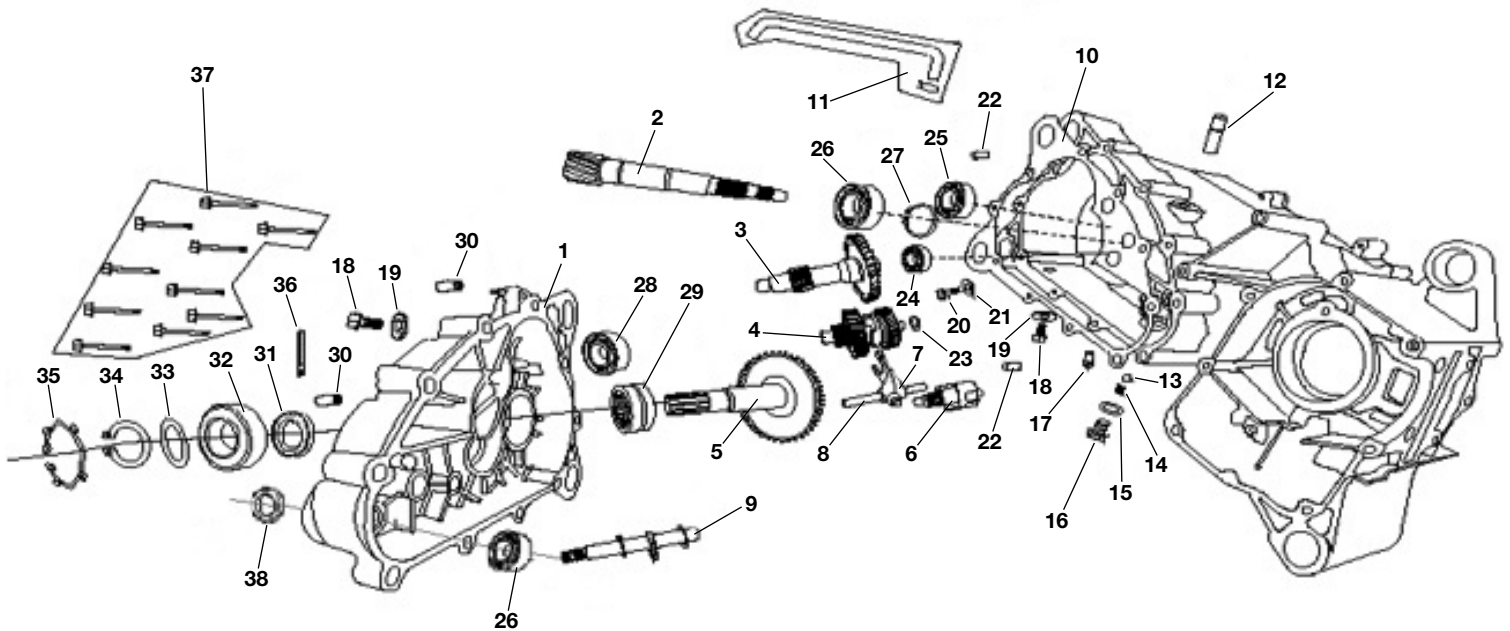
7151 SECTION 3 ENGINE CRANKCASE



Ref#	Part#	Description	Qty
1	14277	HOUSING, CRANKCASE RH - 150CC	1
2	14278	BUSHING, ENGINE HANGER - 150CC	2
3	14279	GASKET, CRANKCASE - 150CC	1
4	14280	HOUSING, CRANKCASE LH - 150CC	1
5	14558	GROMMET	1
6	14281	BOLT, M10 X 1.25 X 15 FHCS ZN	1
7	14282	WASHER, M10.2 X 18 X 1.3 FLAT	1
8	14283	COVER, SMALL LEFT - 150CC	1
9	14284	O-RING, M108 X 2	1
10	14559	PIN	1
11	14285	O-RING, M6 X 1.8	2
12	50104	OIL SEAL 19.8 X 30 X 5	1
13	14286	BOLT, M6 X 1.00 X 18 FHCS ZN	4

Ref#	Part#	Description	Qty
14	14287	PIN, M10 X 14 DOWEL	2
15	14288	BOLT, M12 X 1.5 SPECIAL - 150CC	1
16	14690	WASHER, M12 DAC	2
17	14290	SEAL, M20 X 32 X 6	2
18	14883	TENSIONER, CAM CHAIN - 150CC	1
19	50016	PIN DOWEL SPECIAL 8 X 14	2
20	14291	STUD, M8 X 1.25 X 195.5	2
21	14292	STUD, M8 X 1.25 X 187.5	2
22	14293	WASHER, M8 FLAT ZN	4
23	14294	NUT, M8 X 1.25 FLANGE HEAD	4
24	14295	BOLT, M6 X 1.00 X 50 FHCS ZN	2
25	14501	SPACER, OIL - 150CC	1
26	14296	BOLT, M6 X 1.00 X 12 FHCS ZN	2

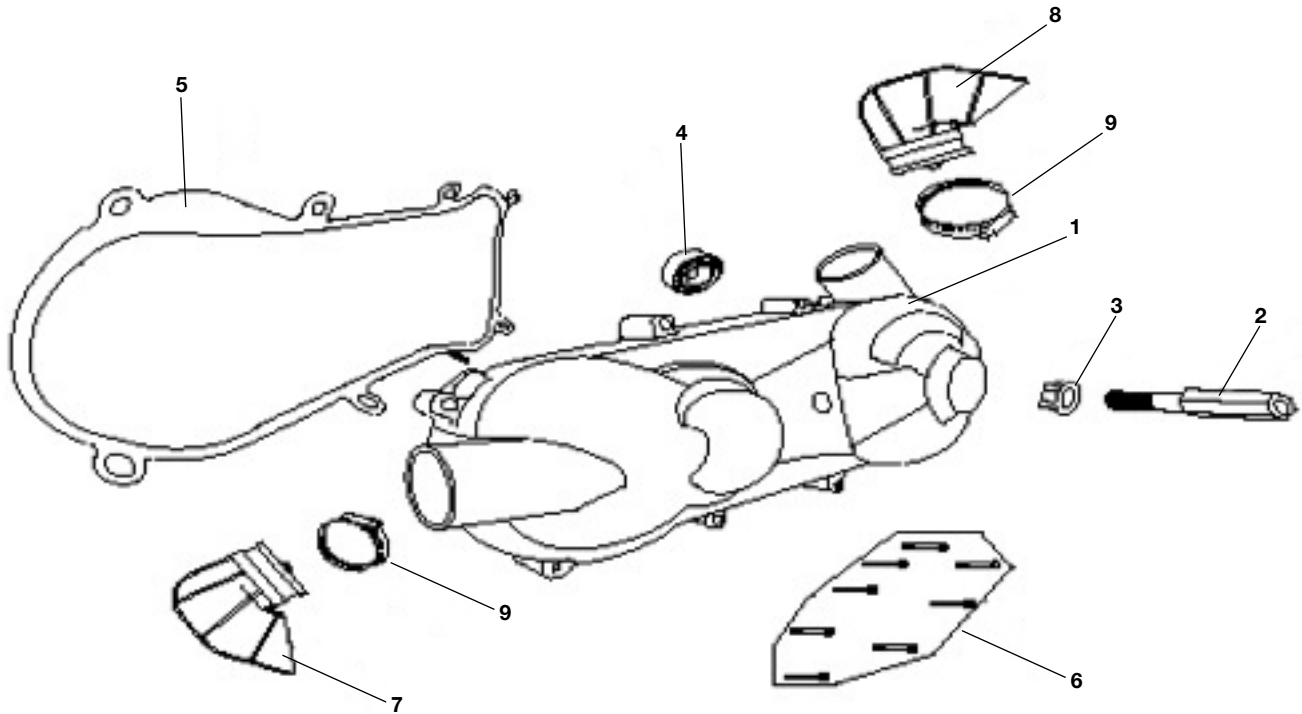
7151 SECTION 4 TRANSMISSION



Ref#	Part#	Description	Qty
1	14297	HOUSING, OUTER TRANSMISSION - 150CC	1
2	14298	GEAR, PRI DRIVE - 150CC	1
3	14299	GEAR, SEC DRIVE - 150CC	1
4	14300	ASM, SHIFT GEAR CLUSTER D/N/R - 150CC	1
5	14301	GEAR, FINAL DRIVE SHAFT - 150CC	1
6	14302	ASM, SHIFT SELECTOR - 150CC	1
7	14303	PAWL, SHIFT SELECTOR - 150CC	1
8	14304	ROD, SHIFT PAWL - 150CC	1
9	14305	SHAFT, SHIFTER CAM - 150CC	1
10	14306	GASKET, TRANSMISSION CASE - 150CC	1
11	14307	TUBE, TRANSMISSION VENT - 150CC	1
12	14308	NIPPLE, VENT TUBE - 150CC LARGE	1
13	14309	BALL, SHIFT INDENT - 150CC	1
14	14310	SPRING, SHIFT INDENT - 150CC	1
15	14311	GASKET, SHIFT INDENT - 150CC	1
16	14312	BOLT, SHIFT INDENT - 150CC	1
17	14502	NIPPLE, VENT TUBE - 150CC SMALL	1
18	14313	BOLT, DRAIN/FILL PLUG - 150CC	2
19	14314	GASKET, TRANS DRAIN PLUG - 150CC	2

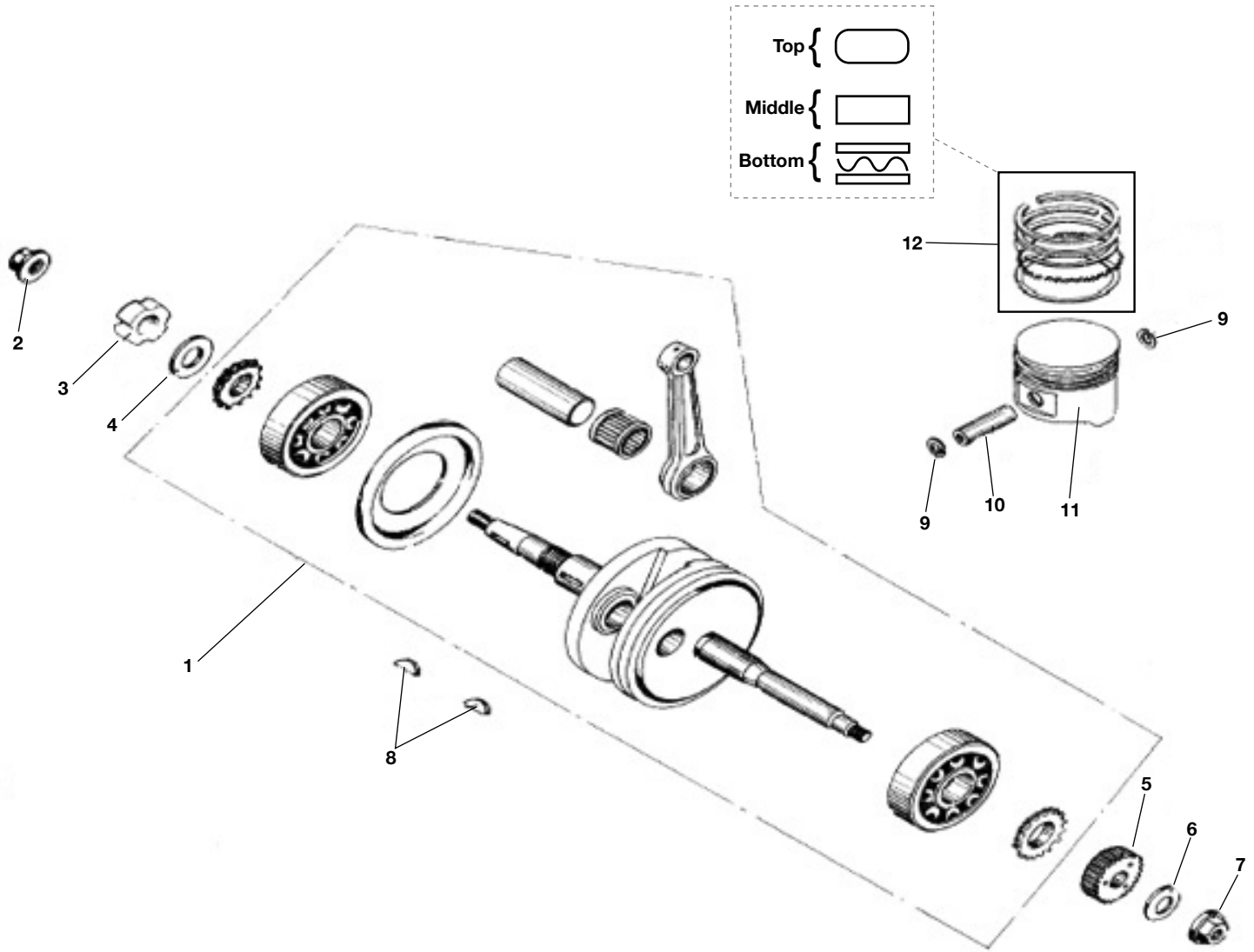
Ref#	Part#	Description	Qty
20	14296	BOLT, M6 X 1.00 X 12 FHCS ZN	2
21	14315	WASHER, M6 FLAT	2
22	14287	PIN, M10 X 14 DOWEL	2
23	14316	SPACER, M15 INNER GEAR - 150CC	1
24	14149	BEARING, OUTER - 6202-Z	1
25	50102	BEARING BALL RADIAL 6203	1
26	14146	BEARING, INNER - 6204-Z	1
27	14106	CIRCLIP, M20	1
28	14503	BEARING, 6302 15 X 42 X 13	1
29	14504	BEARING, RNA4905 30 X 42 X 17	1
30	14505	BUSHING, SHOCK ABSORBING - 150CC	2
31	14318	SEAL, M30 X 40 X 6	1
32	14598	BEARING, SEALED 6205 - 150CC	1
33	14511	WASHER, M22 X 31 X 2.5 FLAT	1
34	14319	CIRCLIP, M25	1
35	14320	CIRCLIP, M52	1
36	14321	CLAMP, WIRE - 150CC	1
37	14235	BOLT, M6 X 1.00 X 40 FHCS ZN	10
38	14597	OIL SEAL, SHIFTER CAM - 150CC	1

7151 SECTION 5 CVT COVER



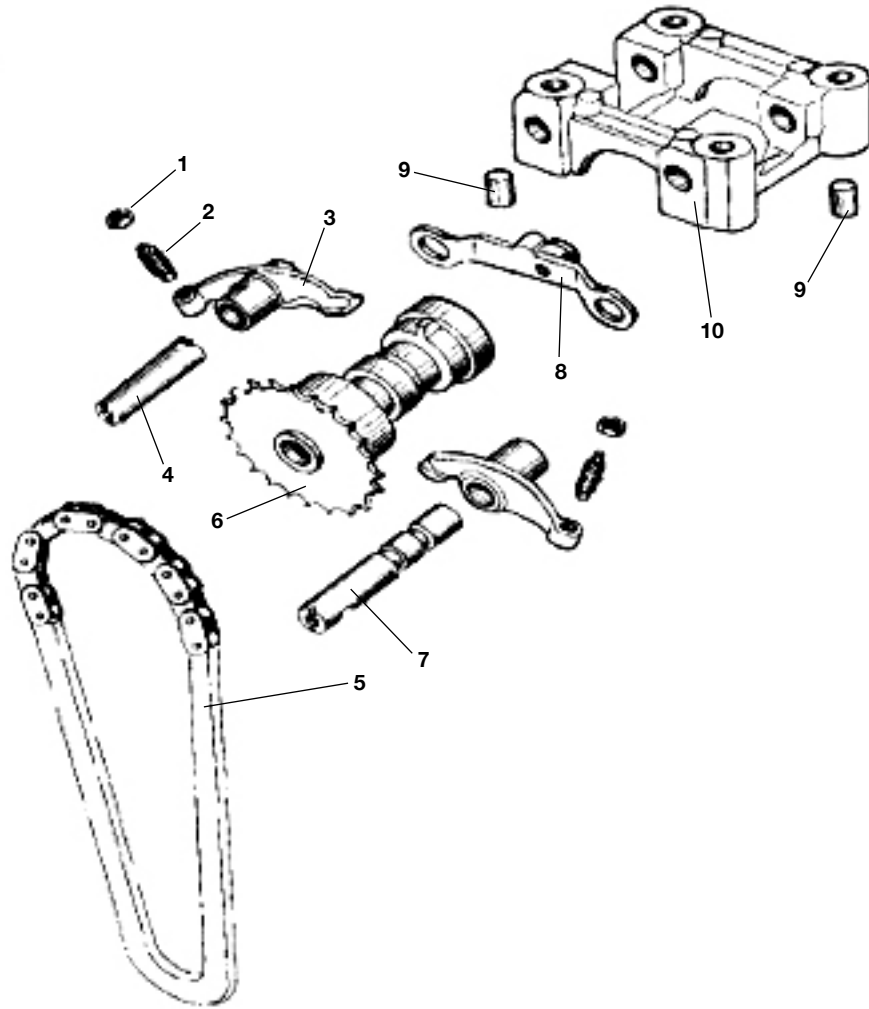
Ref#	Part#	Description	Qty
1	14323	COVER, CVT - 150CC	1
2	14507	BRACKET, EXHAUST - 150CC	1
3	14324	NUT, M12 X 1.25 LOCKING FLANGE ZN	1
4	14508	BEARING, 6200 10 X 30 X 9	2
5	14325	GASKET, CVT COVER - 150CC	1
6	14235	BOLT, M6 X 1.00 X 40 FHCS ZN	8
7	14322	SNORKEL, CVT - 150CC	1
8	14322	SNORKEL, CVT - 150CC	1
9	14509	CLAMP, SNORKEL - 150CC	2

7151 SECTION 7 PISTON, CRANK & CONNECTING ROD



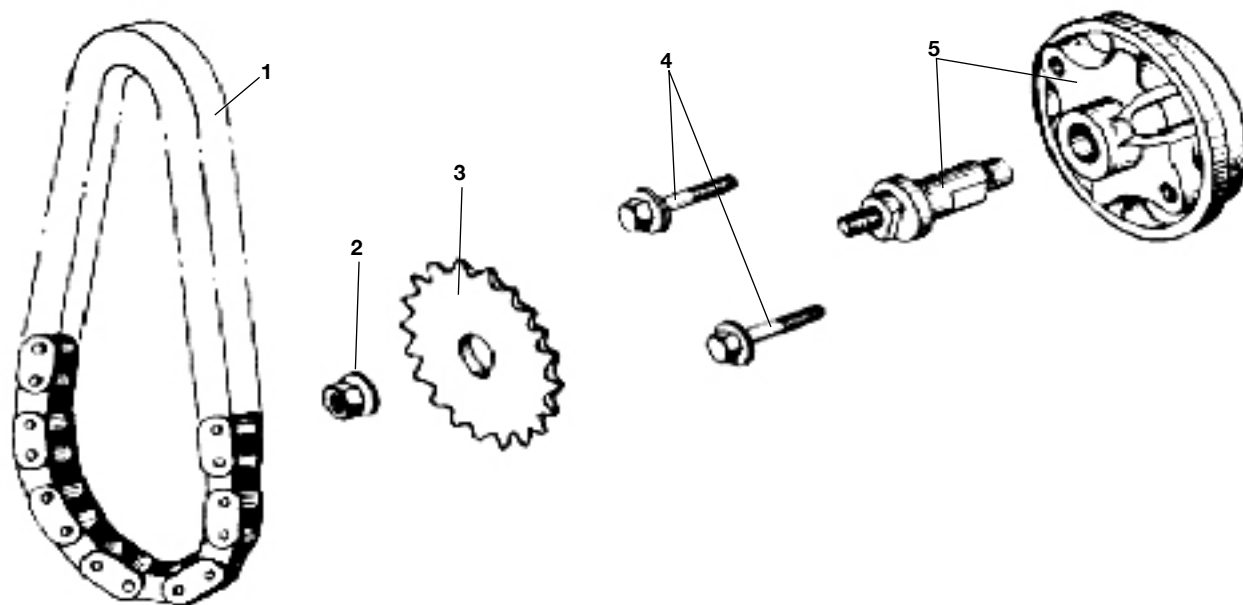
Ref#	Part#	Description	Qty
1	14342	ASM, CRANK - CON ROD - 150CC	1
2	14324	NUT, M12 X 1.25 LOCKING FLANGE ZN	1
3	14510	NUT, M22 X 1.00 SPANNING - 150CC	1
4	14511	WASHER, M22 X 31 X 2.5 FLAT	1
5	14344	GEAR, KICK DRIVE - 150CC	1
6	14690	WASHER, M12 DAC	1
7	14324	NUT, M12 X 1.25 LOCKING FLANGE ZN	1
8	14512	KEY, WOODRUFF M4 X 14	1
9	14345	CLIP, PISTON RETAINING - 150CC	2
10	14346	PIN, PISTON WRIST - 150CC	1
11	14347	PISTON - 150CC	1
12	14348	KIT, PISTON RING - 150CC	1

7151 SECTION 8 CAMSHAFT ASSEMBLY



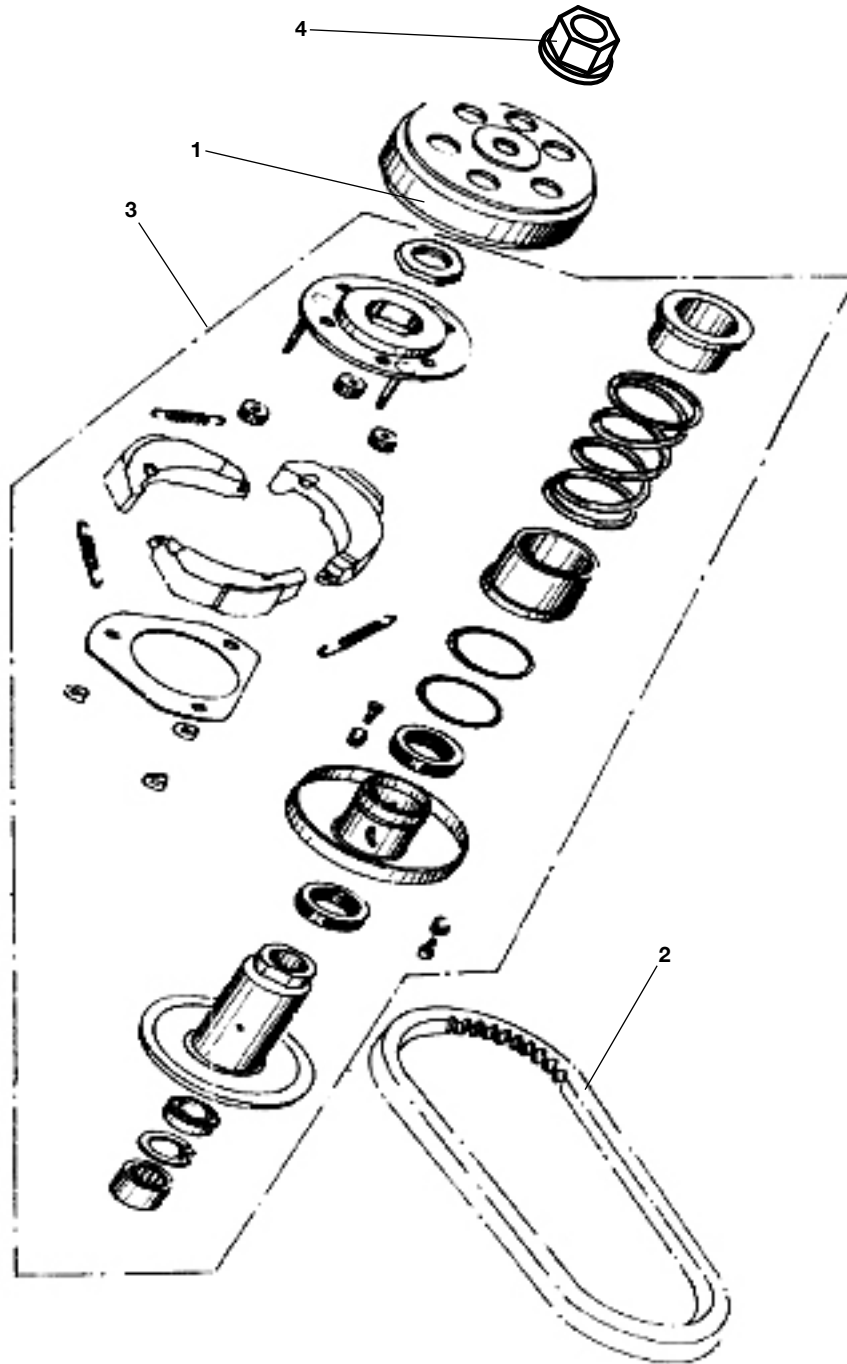
Ref#	Part#	Description	Qty
1	14513	NUT, M5 X 0.5 HEX	2
2	14349	SCREW, TAPPET ADJ - 150CC	2
3	14350	ARM, VALVE ROCKER - 150CC	2
4	14351	SHAFT, EXHAUST ROCKER ARM - 150CC	1
5	14352	CHAIN, CAMSHAFT - 150CC	1
6	14353	CAMSHAFT - 150CC	1
7	14354	SHAFT, INTAKE ROCKER ARM - 150CC	1
8	14355	PLATE, STOP - 150CC	1
9	14266	PIN, M10 X 16 DOWEL	2
10	14356	CAP, CAMSHAFT BRG - 150CC	1

7151 SECTION 9 OIL PUMP ASSEMBLY



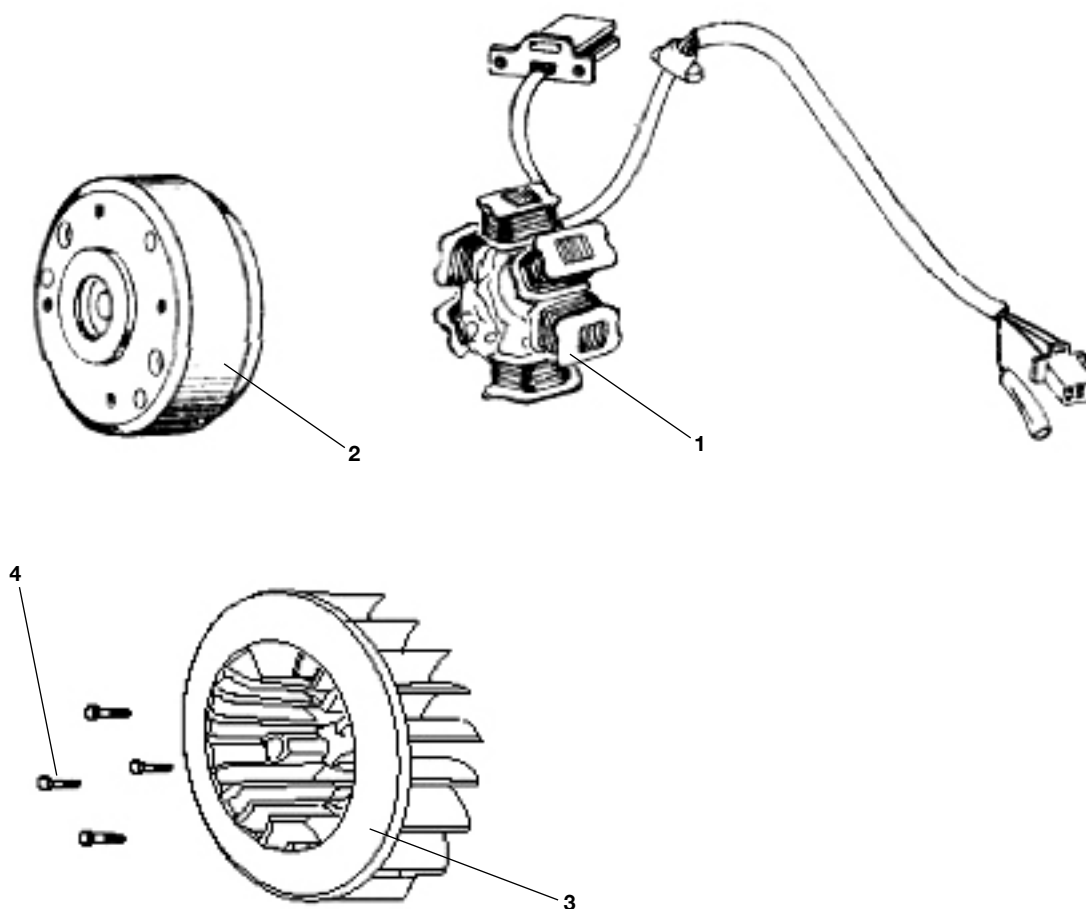
Ref#	Part#	Description	Qty
1	14357	CHAIN, OIL PUMP - 150CC	1
2	14358	NUT, M6 X 1.00 HEX FLANGE	1
3	14359	SPROCKET, OIL PUMP - 150CC	1
4	14360	BOLT, M6 X 1.00 X 30 FHCS ZN	2
5	14361	ASM, OIL PUMP - 150CC	1

7151 SECTION 10 DRIVEN PULLEY & CLUTCH



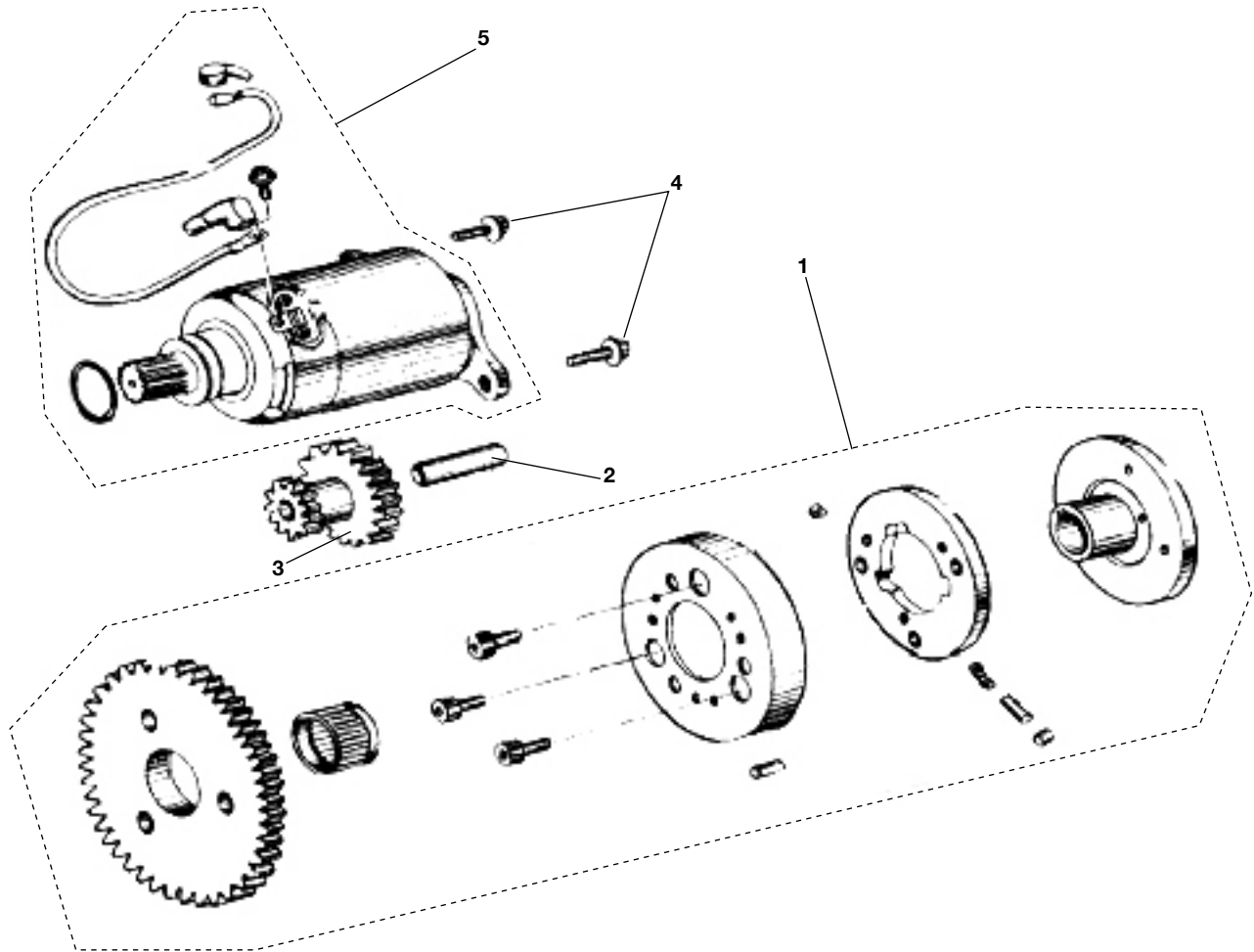
Ref#	Part#	Description	Qty
1	14362	ASM, OUTER CLUTCH - 150CC	1
2	14363	BELT, CVT - 150CC	1
3	14364	ASM, DRIVEN PULLEY - 150CC	1
4	15164	NUT, M12X1.25 LF THIN	1

7151 SECTION 11 ENGINE ELECTRICAL



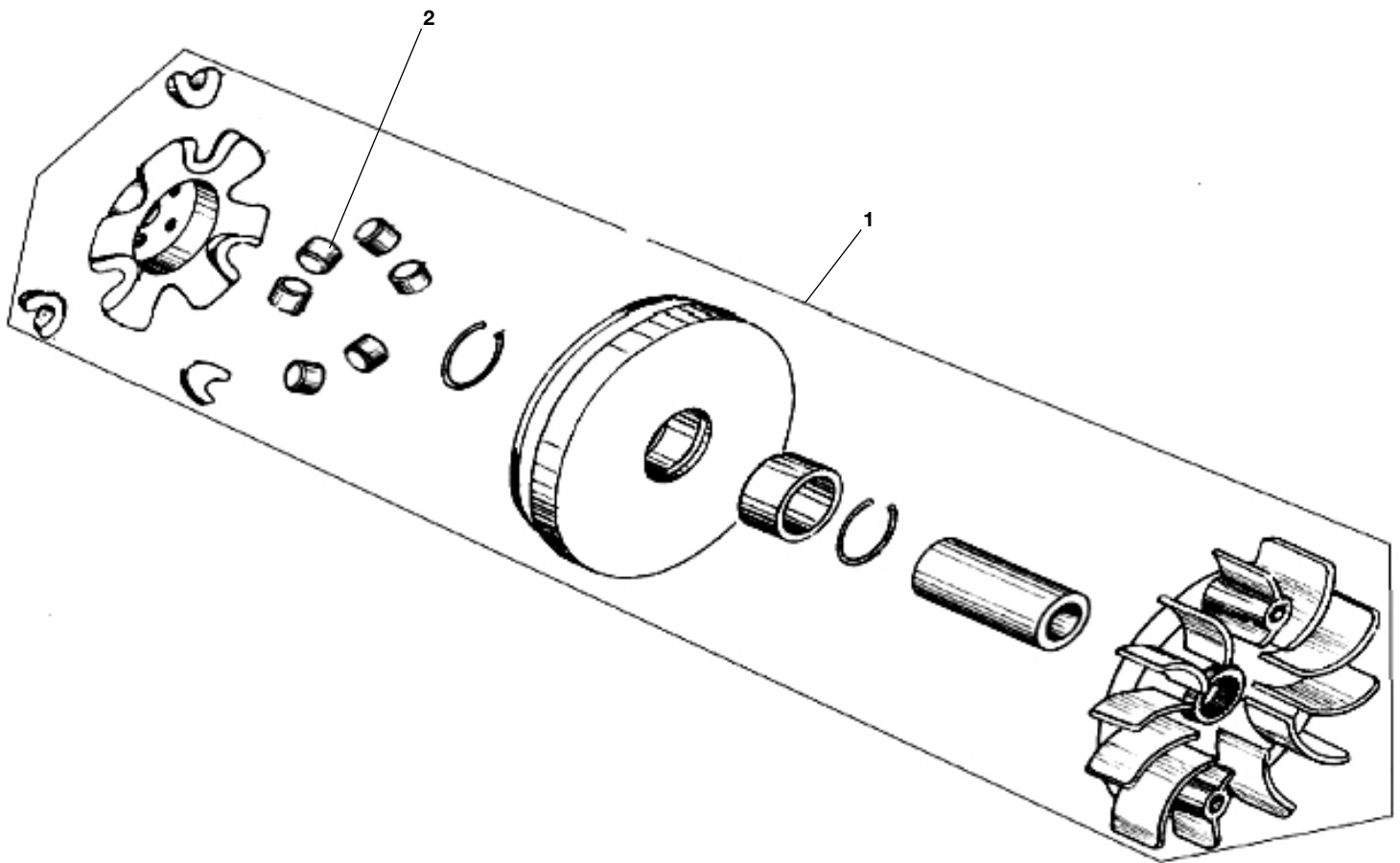
Ref#	Part#	Description	Qty
1	14365	MAGNETO - 150CC	1
2	14366	FLYWHEEL - 150CC	1
3	14367	FAN, COOLING - 150CC	1
4	14368	BOLT, M6 X 1.00 X 15 FHCS ZN	4

7151 SECTION 12 ELECTRIC START



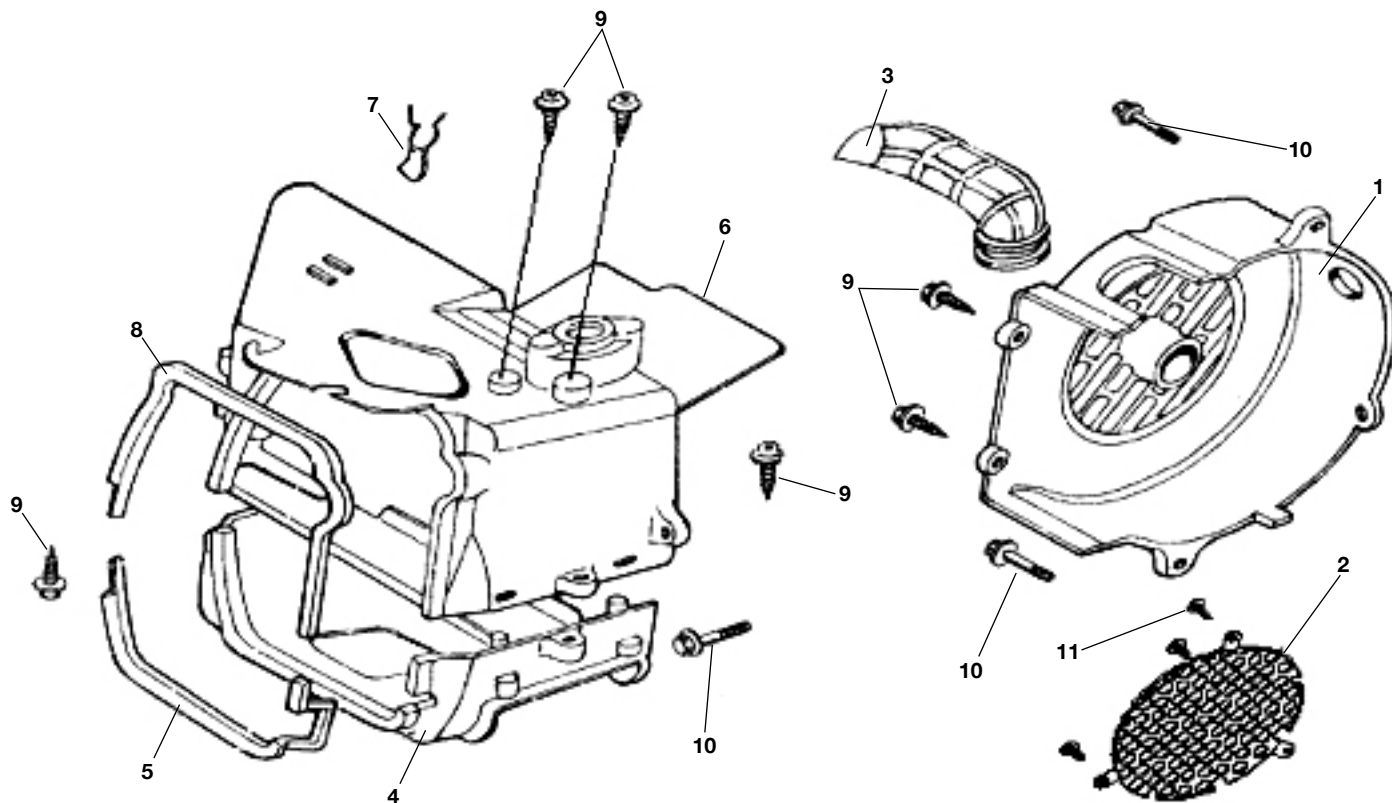
Ref#	Part#	Description	Qty
1	14369	ASM, STARTER CLUTCH - 150CC	1
2	14370	SHAFT, STARTER RED - 150CC	1
3	14371	GEAR, STARTER RED - 150CC	1
4	14372	BOLT, M6 X 1.00 X 16 FHCS ZN	2
5	14373	ASM, STARTER MOTOR - 150CC	1

7151 SECTION 13 DRIVER PULLEY



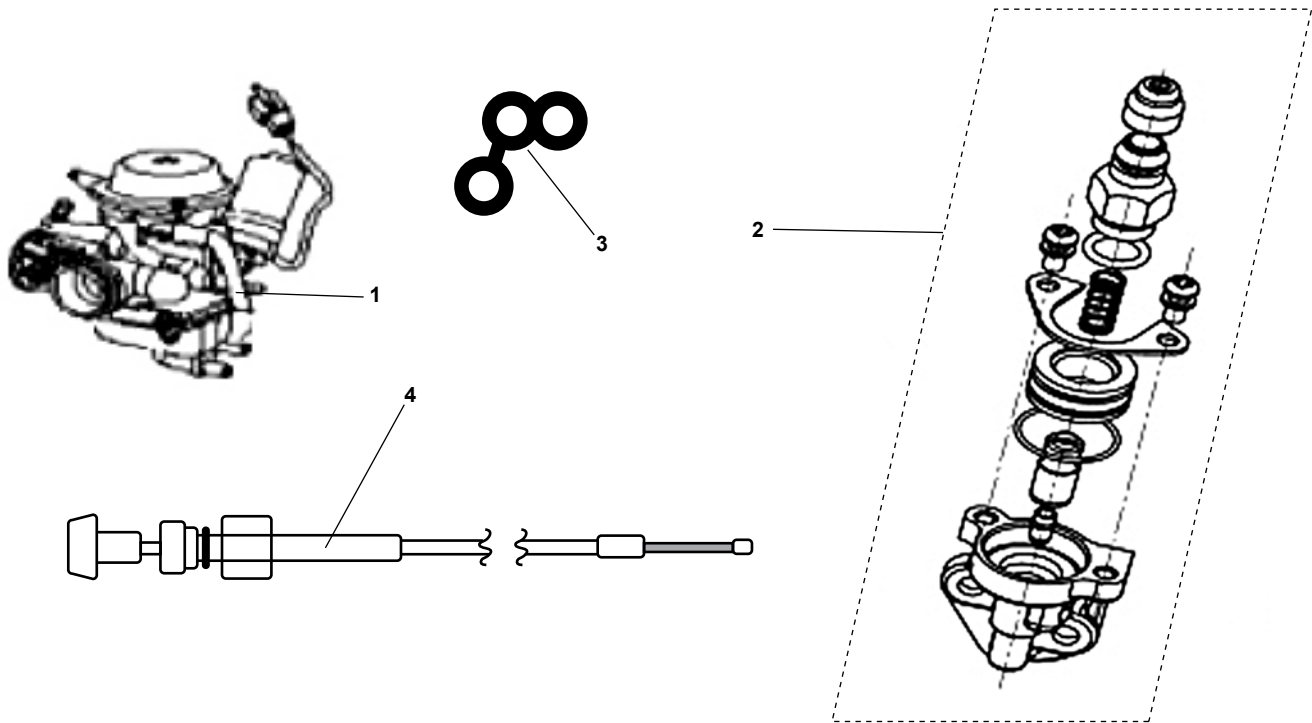
Ref#	Part#	Description	Qty
1	14374	ASM, DRIVER PULLEY - 150CC	1
2	14375	WEIGHT, DRIVER PULLEY - 150CC	6

7151 SECTION 14 FAN COVER & SHROUD ASSEMBLY



Ref#	Part#	Description	Qty
1	14540	COVER, FAN COMP - 150CC	1
2	14541	COVER, DUST - 150CC	1
3	14542	DUCT, CARBURETOR COOLING - 150CC	1
4	14543	SHROUD, LOWER - 150CC	1
5	14544	SEAL, LOWER SHROUD - 150CC	1
6	14545	SHROUD, UPPER - 150CC	1
7	14546	CLIP, CORD - 150CC	1
8	14547	SEAL, UPPER SHROUD - 150CC	1
9	50065	SCREW TAPPING	6
10	50069	BOLT FLANGE SH 6 X 18	3
11	14539	SCREW, 3.5 X 13 STFH	3

7151 SECTION 15 CARBURETOR



Ref#	Part#	Description	Qty
1	14925	ASM, CARBURETOR 150CC	1
2	15458	ASM, MANUAL ENRICHER / CHOKE	1
3	15460	O-RING, SPECIAL: CARB ENRICHER	1
4	15429	CABLE, CHOKE 1220 MM LONG	1

7151 SECTION 16

FRAME GROUP WARNING LABELS

⚠ WARNING

ALWAYS WEAR SEATBELT

Seatbelt must be properly fastened and adjusted for each occupant prior to operating the vehicle; See Owner's Manual.

11330-I

⚠ WARNING

ENTANGLEMENT HAZARD

Shoulder length and longer hair or loose clothing can get caught in moving parts behind or below the seat. **Restrain hair at or above shoulder level.** Restrained hair must not interfere with the proper fit of the helmet. **Securely restrain anything loose** that reaches behind or below the seat.

11330-B

⚠ WARNING

OBSERVE THE FOLLOWING INSTRUCTIONS

Failure to understand and follow Warnings and Instructions for the safe use and maintenance of this product may result in **Death or Injury!** This information is contained in the Warning Labels, Owner's Manual & Supplements, Safety Video, and Engine Manual supplied with this product. Make sure that you understand and follow all Warnings and Instructions in this material.

- Read owner/operator manuals carefully.
- Adult supervision required.
- Always wear a D.O.T.-approved motorcycle helmet, eye protection, and protective clothing.
- Do NOT operate the vehicle without the brush bars securely in place.
- Keep all covers and shields properly installed.
- Throttle, Stop Switch, and Brake Controls must work properly and freely before starting the engine.
- Operator must be seated, safety belt must be fastened, and brake applied before operating the vehicle.
- Not legal for street use. Use only on flat, level, off-road terrain.
- Not designed for racing or commercial use.
- Never operate at speeds too fast for your skills or the conditions.
- Never attempt jumps or other stunts.
- Never ride after consuming alcohol, drugs, or other intoxicants.

If you did not receive any of the material listed above, please call **1-800-643-7332** and request to have them sent to you at no charge.

11330-J

⚠ WARNING

PINCH HAZARD

Exercise caution when working on drive components. Drive chain turns when vehicle is in motion. **Chock wheels before removing drive cover.** Never remove drive cover or attempt to service with engine running.

11330-R

⚠ WARNING

GUARD MUST BE IN PLACE

This guard must be in place during engine operation. Keep hands, feet, and loose garments away from engine, chain, and drive components.

⚠ CAUTION

DO NOT PUT FOOT ON DRIVE COVER

11330-C

⚠ CAUTION

DO NOT SHIFT WHILE IN MOTION

D To change gears, stop the vehicle. Shift with the engine at idle.

N Shifting gears with the engine speed above idle or with the kart in motion may cause transmission damage

R

11330-Q

⚠ WARNING

EXHAUST GAS HARMFUL

Engine exhaust from this product contains chemicals, known in certain quantities to cause cancer, birth defects, or other reproductive harm.

11330-N

⚠ WARNING

HOT SURFACES

Surfaces around the engine and exhaust can be extremely hot. Allow surfaces to cool before servicing.

11330-A

⚠ WARNING

LIGHT CARGO ONLY

This rack is intended for light cargo only, not exceeding 25 lbs. All cargo must be secured with proper tie-downs.

11330-P

⚠ WARNING

LIGHTS ARE FOR DAYTIME USE ONLY

These lights are daytime running lights only and are intended to increase visual awareness of this vehicle during daytime use. These lights are not intended for nighttime operation of the kart.

13403

⚠ WARNING

Under 13 Age

This vehicle is not to be operated by anyone under **13** years of age. A speed reduction kit is available for this vehicle.

11330-T

⚠ CAUTION

USE ONLY MID-GRADE UNLEADED GASOLINE (89-93 OCTANE)

E15 This engine is designed to run on automotive gasoline with allowable ethanol blends from 0% - 10%.

E85 Attempting to use anything other than this will cause damage to the engine and void the manufacturer warranty.

⚠ WARNING

CHECK TIRE PRESSURES

Improper inflation of tires can cause loss of control, resulting in serious injury or death. Refer to Owner's Manual for proper operating pressure.

11330-D

⚠ WARNING

NO RIDING

All occupants must be inside the vehicle and wearing the proper restraints and safety gear. **Absolutely no riding on the outside of the vehicle or on the cargo rack.**

11330-K

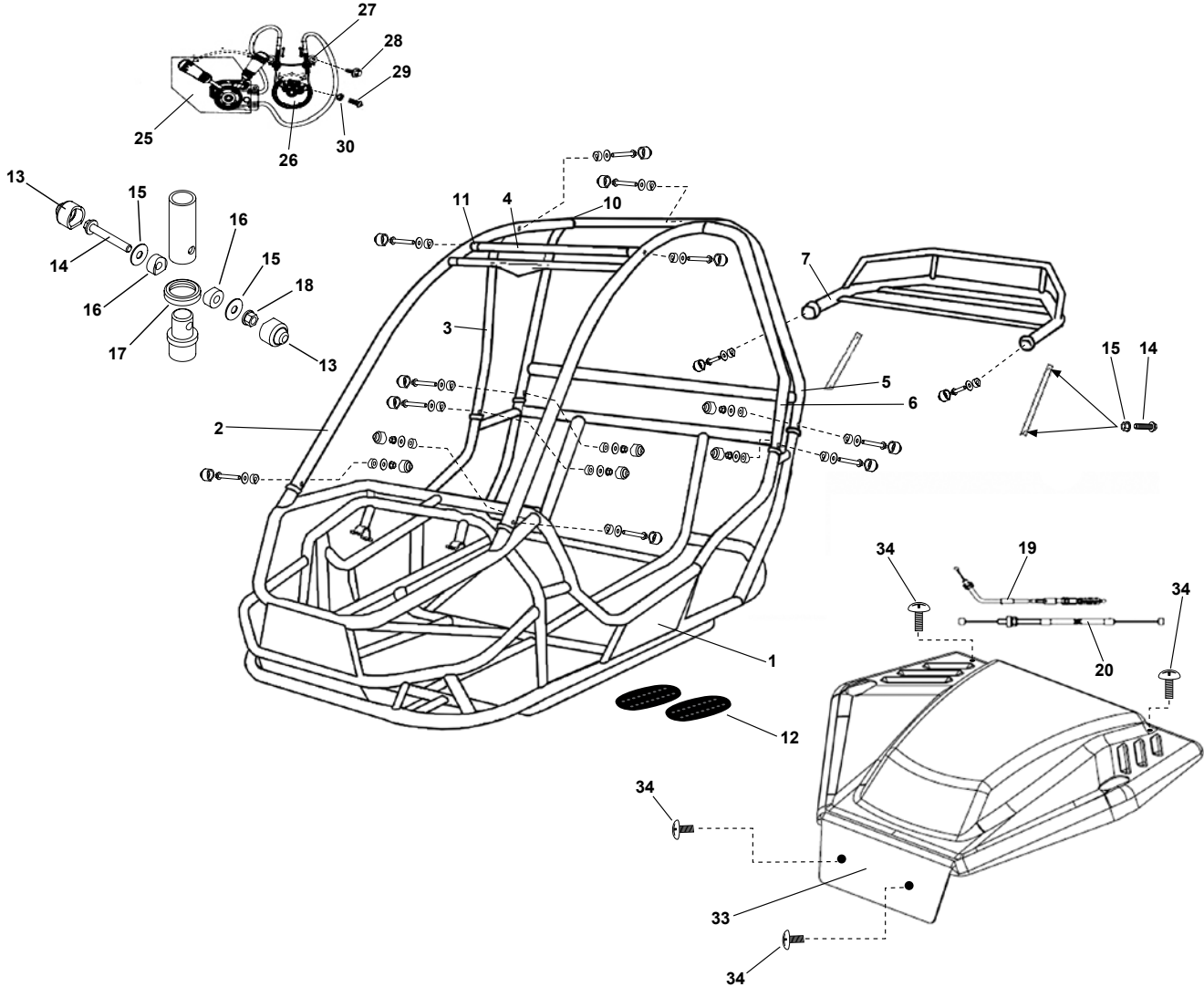
⚠ WARNING

WEAR A HELMET

Always wear a D.O.T.-approved motorcycle helmet when operating this vehicle.

11329

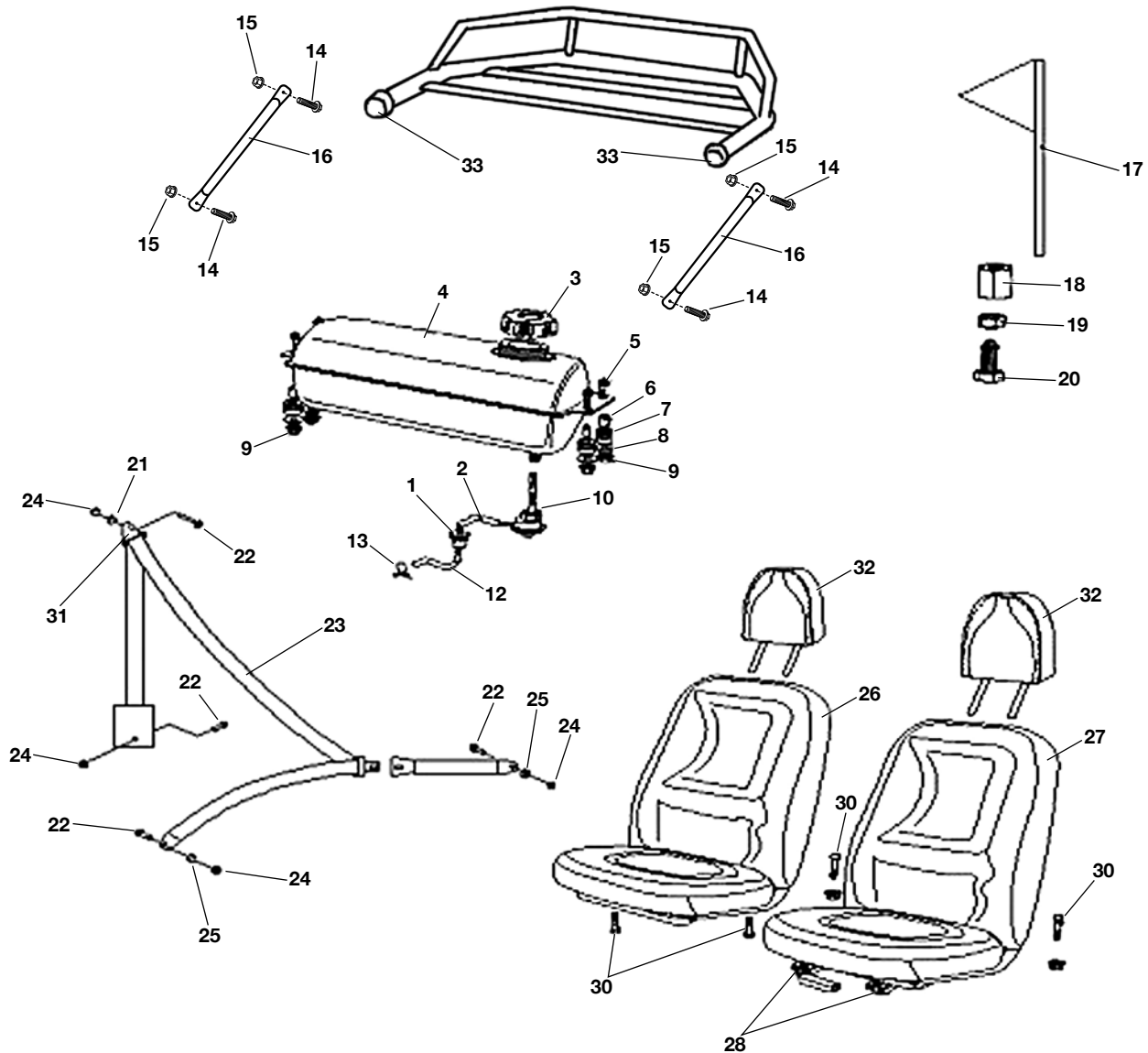
7151 SECTION 17 FRAME GROUP



Ref#	Part#	Description	Qty
1	N/A	FRAME, 7151 CHARCOAL	1
2	15001-48	BAR, A PILLAR - 6152 - CHAR	2
3	15002-48	BAR, B PILLAR RH - 6152 - CHAR	1
4	14081	WDMT, OH CROSS - 7150 - CHARCOAL	1
5	15004-48	BAR, C PILLAR - 7151 - CHAR	1
6	15005-48	BAR, B PILLAR LH - 6152 - CHAR	1
7	15548-48	RACK, REAR - 7151 - CHAR	1
8	14425	BOLT, M5 X .75 X 25 PHMS ZN	1
9	14091	PAD, FOAM B PILLAR W/VINYL WRAP *	2
10	14083	ENDCAP, BAR - 1.25 BLACK PLASTIC	6
11	14084	ENDCAP, BAR - 1.00 BLACK PLASTIC	2
12	14092	PAD, RUBER FOOT - 7150	4
13	14946	COVER, BOLT CAP - 1.25	22
14	14086	BOLT, M8 X 1.25 X 55 FHCS ZN	16
15	14944	WASHER, BAR CONNECTION	22
16	14087	WASHER, 8M CONCAVE CLAMP DAC	22
17	14942	SEAL, BAR CONNECTION - 1.25	6

Ref#	Part#	Description	Qty
18	14088	NUT, M8 X 1.25 LOCKING FLANGE DAC	6
19	14456	CABLE, D/N/R SHIFT - 150CC	2
20	14094	CABLE, THROTTLE - 6150/7150	1
21	15484	HOOD, RED CARBIDE - 7151	1
22	15497	SCREW, M6 X 1.0 X 16 PHMS DAC	6
23	15086	LIGHT, ROUND 3-1/2" - 25W	2
24	14494	WASHER, M5 SPLIT LOCK ZN	3
25	14478	ASM, TRANS SHIFT LEVER - 150CC	1
26	14479	DISC, SHIFT CONTROL - 150CC	1
27	14473	BRACKET, SHIFT CABLE - 150CC	1
28	14420	SCREW, M4 X .75 X 31 PHMS ZN	1
29	14426	BOLT, M6 X 1.00 X 14 FHCS ZN	2
30	14493	NUT, M4 X .75 HEX ZN	1
31	14090	ASM, REAR VIEW MIRROR - 7150 (not shown)	1
32	14098	WASHER, MIRROR MOUNT - 7150 (not shown)	1
33	15484	HOOD, RED CARBIDE 7151	1
34	15497	SCREW, M6 X 1.0 X 16 PHMS DAC	4

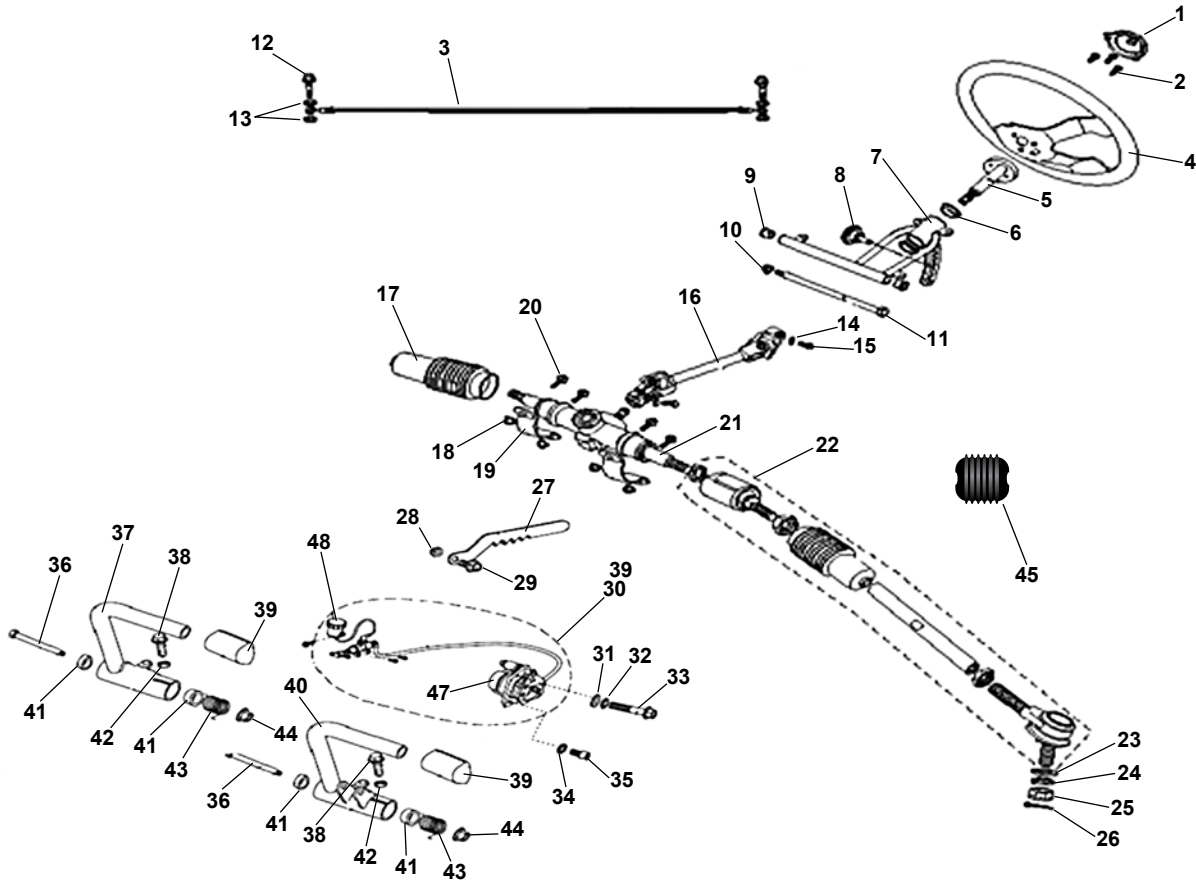
7151 SECTION 17 FRAME GROUP CONT.



Ref#	Part#	Description	Qty
1	14167	FILTER, FUEL	1
2	14164	LINE, FUEL #1	1
3	13871	CAP, FUEL - 6150/7150	1
4	14161	FUEL TANK - CHARCOAL - 6150/7150	1
5	14086	BOLT, M8 X 1.25 X 55 FHCS DAC	4
6	14162	SPACER, FUEL TANK	4
7	14163	BUSHING, FUEL TANK MOUNT	4
8	14293	WASHER, M8 FLAT	4
9	14088	NUT, M8 X 1.25 LOCKING FLANGE	4
10	15454	VALVE, FUEL MANUAL ON/OFF/RES W/ O-RING	1
11	14165	LINE, VACUUM #1 - 6150/7150 (not shown)	1
12	14166	LINE, FUEL #2	1
13	80050	CLIP - 8 X 0.8	6
14	14239	BOLT, M8 X 1.25 X 20 FHCS DAC	4
15	14088	NUT, M8 X 1.25 LOCKING FLANGE	4
16	15007-48	ARM, RACK SPPT - 7151 - CHAR	2
17	14464	FLAG, SAFETY	1

Ref#	Part#	Description	Qty
18	14466	NUT, DECORATIVE PLASTIC FLAG MNT	1
19	14492	NUT, M12 X 1.25	1
20	14465	BOLT, M12 X 1.25 X 30 FLAG MOUNTING	1
21	14289	SPACER, M10 STEPPED SEAT BELT DAC	2
22	14451	BOLT, M10 X 1.25 X 25 FHCS DAC	8
23	8778	SEATBELT, RETRACTABLE W/SLEEVE	2
24	14243	NUT, M10 X 1.25 LOCKING FLANGE DAC	8
25	14690	WASHER, M12 DAC	3
26	14169	SEAT, BUCKET - RH - BLK/RED - 7150	1
27	14170	SEAT, BUCKET - LH - BLK/RED - 7150	1
28	14171	SLIDE, SEAT (PAIR)	1
29	14994	COVER, SEAT SLIDE HANDLE (BLK) (not shown)	1
30	14440	BOLT, M8 X 1.25 X 40 HHCS DAC	4
31	15256	CAP, SEAT BELT SHOULDER	2
32	14168	ASM, HEAD REST - BLK/RED - 7150	2
33	14083	ENDCAP, BAR - 1.25 BLACK PLASTIC	2
34	14463	CAP, M22 INTERNAL TUBE	2

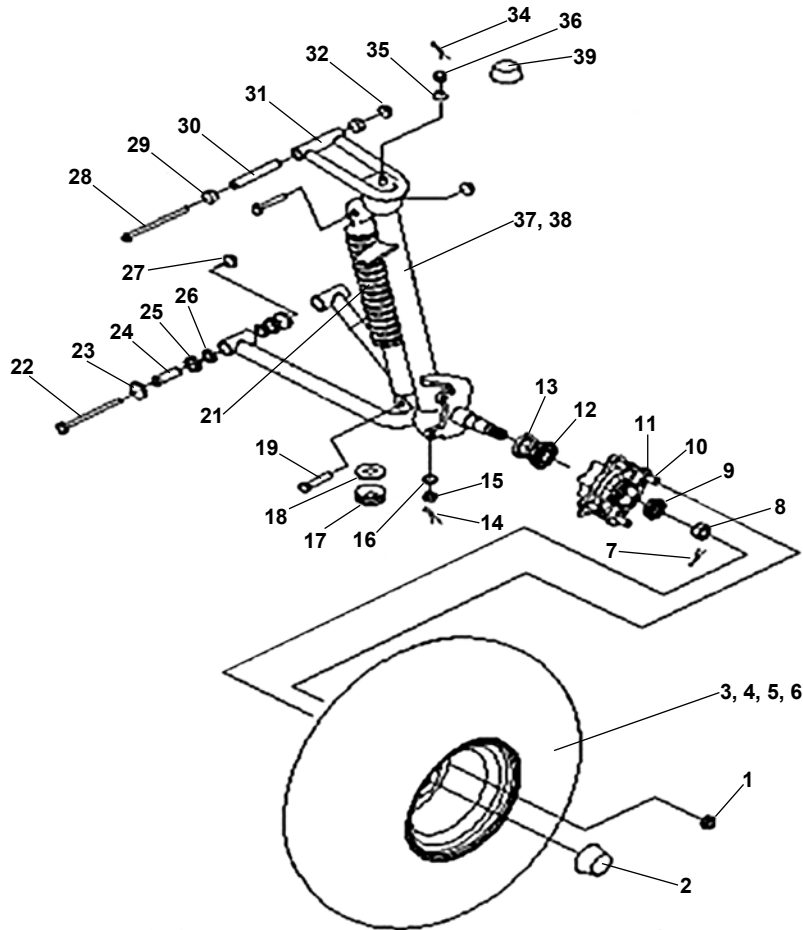
7151 SECTION 18 STEERING & BRAKES



Ref#	Part#	Description	Qty
1	14100	COVER, STEERING WHEEL - 6150/7150	1
2	14237	BOLT, M6 X 1.00 X 12 HHCS DAC	3
3	14525	HOSE, BRAKE - 6150	1
4	14102	STEERING WHEEL - 6150/7150	1
5	14103	SHAFT, STEERING - 7150	1
6	14104	BUSHING, FLANGED SLEEVE 20 X 28 X 24.1	2
7	14111	BRACKET, TILT STEERING - CHAR - 7150	1
8	14125	KNOB, STEERING TILT - 7150	1
9	14126	BUSHING, FLANGED SLEEVE 12 X 16 X 12	2
10	14088	NUT, M8 X 1.25 LOCKING FLANGE DAC	1
11	14444	BOLT, M8 X 1.25 X 240 HHCS ZN	1
12	14460	BOLT, M10 X 24 BRAKE BANJO	2
13	14127	WASHER, BRASS BRAKE LINE	4
14	14495	WASHER, M8 SPLIT LOCK DAC	2
15	14437	BOLT, M8 X 1.25 X 25 HHCS ZN	2
16	14107	SHAFT, STEERING U-JOINT - 7150	1
17	14109	BOOT, R&P BLACK RUBBER - 7150	2
18	14088	NUT, M8 X 1.25 LOCKING FLANGE DAC	8
19	14112	BRACKET, RACK AND PINION MNT	2
20	14436	BOLT, M8 X 1.25 X 25 FHCS DAC	4
21	14108	ASM, RACK AND PINION - 7150	1
22	14459	ASM, TIE ROD END - 7150	2
23	14240	WASHER, M10 FLAT ZN	2
24	14241	WASHER, M10 SPLIT LOCK ZN	2

Ref#	Part#	Description	Qty
25	14242	NUT, M10 X 1.25 CASTLE	2
26	14110	PIN, M2 X 15 COTTER	2
27	14528	LEVER, PARKING BRAKE - 6150	1
28	14088	NUT, M8 X 1.25 LOCKING FLANGE DAC	1
29	14436	BOLT, M8 X 1.25 X 25 FHCS DAC	1
30	15012	ASM, HYD BRAKE - 6152	1
31	14293	WASHER, M8 FLAT DAC	1
32	14495	WASHER, M8 SPLIT LOCK DAC	1
33	14615	BOLT, M8 X 1.25 X 95 FLANGE DAC	1
34	14748	WASHER, M8 SPLIT LOCK DAC	1
35	14455	BOLT, M8 X 1.25 X 14 SHCS DAC	1
36	15010	BOLT, M12 X 84 SHOULDER DAC	2
37	15011-48	PEDAL, THROTTLE - 6151 - CHAR	1
38	14439	BOLT, M8 X 1.25 X 40 FHCS DAC	2
39	14527	CAP, BRAKE PEDAL - 6150	2
40	14387-48	PEDAL, BRAKE - 6150 CHARCOAL	1
41	14119	BUSHING, SLEEVE 12 X 21 X 12	4
42	14610	NUT, M8 X 1.25 DAC	2
43	14120	SPRING, BRAKE PEDAL - 7150	2
44	14088	NUT, M8 X 1.25 LOCKING FLANGE DAC	2
45	14412	BOOT, STEERING SHAFT BLACK RUBBER - 7150	2
46	15077	KIT, BRAKE PAD REAR	1
47	15076	ASM, BRAKE CALIPER - REAR	1
48	15553	ASM, MASTER CYLINDER - 6152 / 7151	1

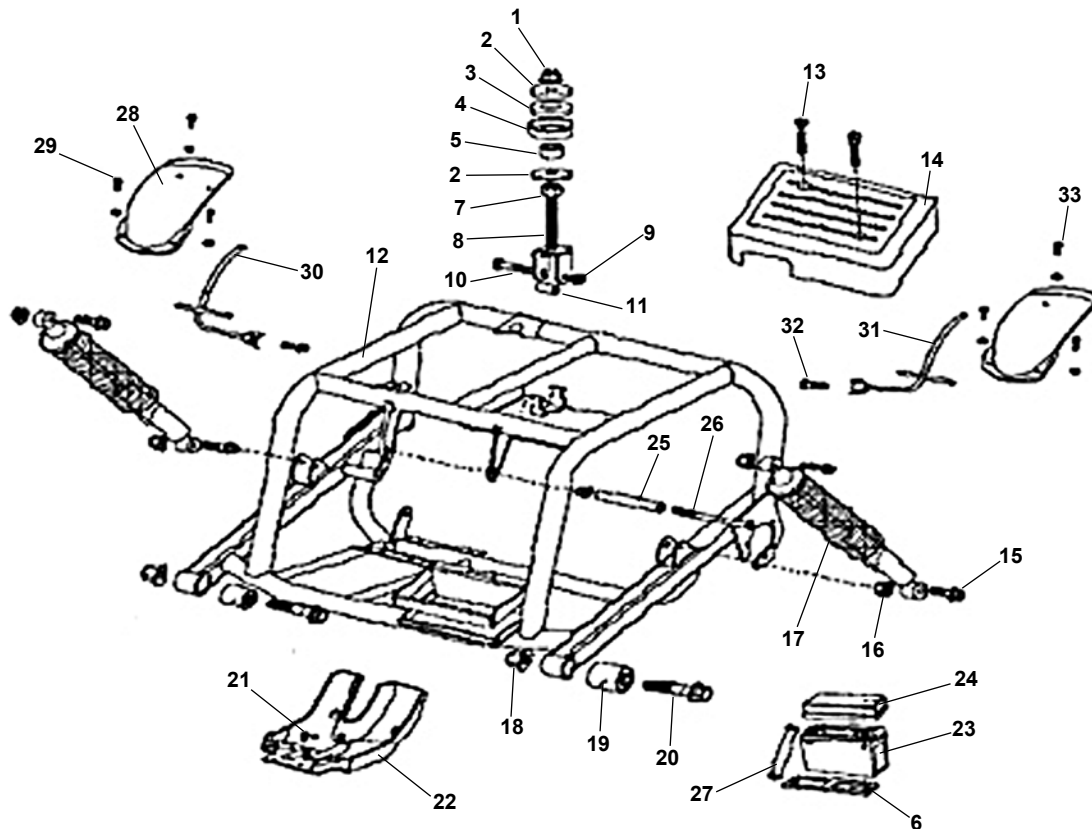
7151 SECTION 19 FRONT SUSPENSION



Ref#	Part#	Description	Qty
1	13979	NUT, M10 X 1.25 WF DAC	8
2	14151	CAP, HUB NOSE - BLACK RUBBER	2
3	14397	ASM, TIRE/WH FAR EAST RH - 17X7-8	1
4	14396	ASM, TIRE/WH FAR EAST LH - 17X7-8	1
5	14751	TIRE, FAR EAST 17X7-8	2
6	14755	WHEEL, 8 X 5 4-110MM, SILVER	2
7	14150	PIN, M2 X 20 COTTER	2
8	14727	NUT, M14 X 1.25 CASTLE	2
9	14149	BEARING, OUTER - 6202-Z	2
10	14147	STUD, M10 X 1.25 X 31 WHEEL	8
11	14148	HUB, FRONT WHEEL - 6150/7150	2
12	14146	BEARING, INNER - 6204-Z	2
13	14145	SEAL, M47 X 25 X 7 DUST	2
14	14490	PIN, M1.8 X 20 COTTER	2
15	14244	NUT, M12 X 1.25 CASTLE	2
16	14245	WASHER, M12 SPLIT LOCK	2
17	14137	SEAL, BALL JOINT - 6150/7150	4
18	14138	SPACER, BALL JOINT HEAD - 6150/7150	4
19	14246	BOLT, M10 X 1.25 X 40 FHCS ZN	4
20	14157-48	A ARM, LOWER - CHAR W/ZERK	2
21	14153	SHOCK, 325MM FRONT - CHR/M/YEL - 7150	2
22	14447	BOLT, M10 X 1.25 X 80 FHCS ZN	4

Ref#	Part#	Description	Qty
23	14154	CAP, DUST - LWR SUSP ARM - 7150	8
24	14140	SPANNER, A ARM LOWER - 7150	4
25	14155	BUSHING, FLANGED SLEEVE 15 X 21 X 16	8
26	14156	O-RING, M21.2 X 2.65	8
27	14243	NUT, M10 X 1.25 LOCKING FLANGE ZN	8
28	14133	BOLT, M8 X 1.25 X 105 FHCS ZN	2
29	14126	BUSHING, FLANGED SLEEVE 12 X 16 X 12	4
30	14134	SPANNER, A ARM UPPER - 7150	2
31	14136-48	A ARM, UPPER - CHAR W/ZERK	2
32	14088	NUT, M8 X 1.25 LOCKING FLANGE ZN	2
33	14594	GREASE ZERK (NOT SHOWN)	6
34	14490	PIN, M1.8 X 20 COTTER	2
35	14245	WASHER, M12 SPLIT LOCK ZN	2
36	14244	NUT, M12 X 1.25 CASTLE DAC	2
37	15205-48	ASM, STRUT/SPINDLE LH - CHAR - 6152	1
38	15204-48	ASM, STRUT/SPINDLE RH - CHAR - 6152	1
39	14834	CAP, NUT COVER RUBBER - BLK	2
40	14243	NUT, M10 X 1.25 LOCKING FLANGE DAC	4
41	15206	FENDER, FRONT - 6152	2
42	15207	MOUNT, FRONT FENDER RH - 6152	1
43	15208	MOUNT, FRONT FENDER LH - 6152	1
44	14235	BOLT, M6 X 1.00 X 40 FHCS ZN	2

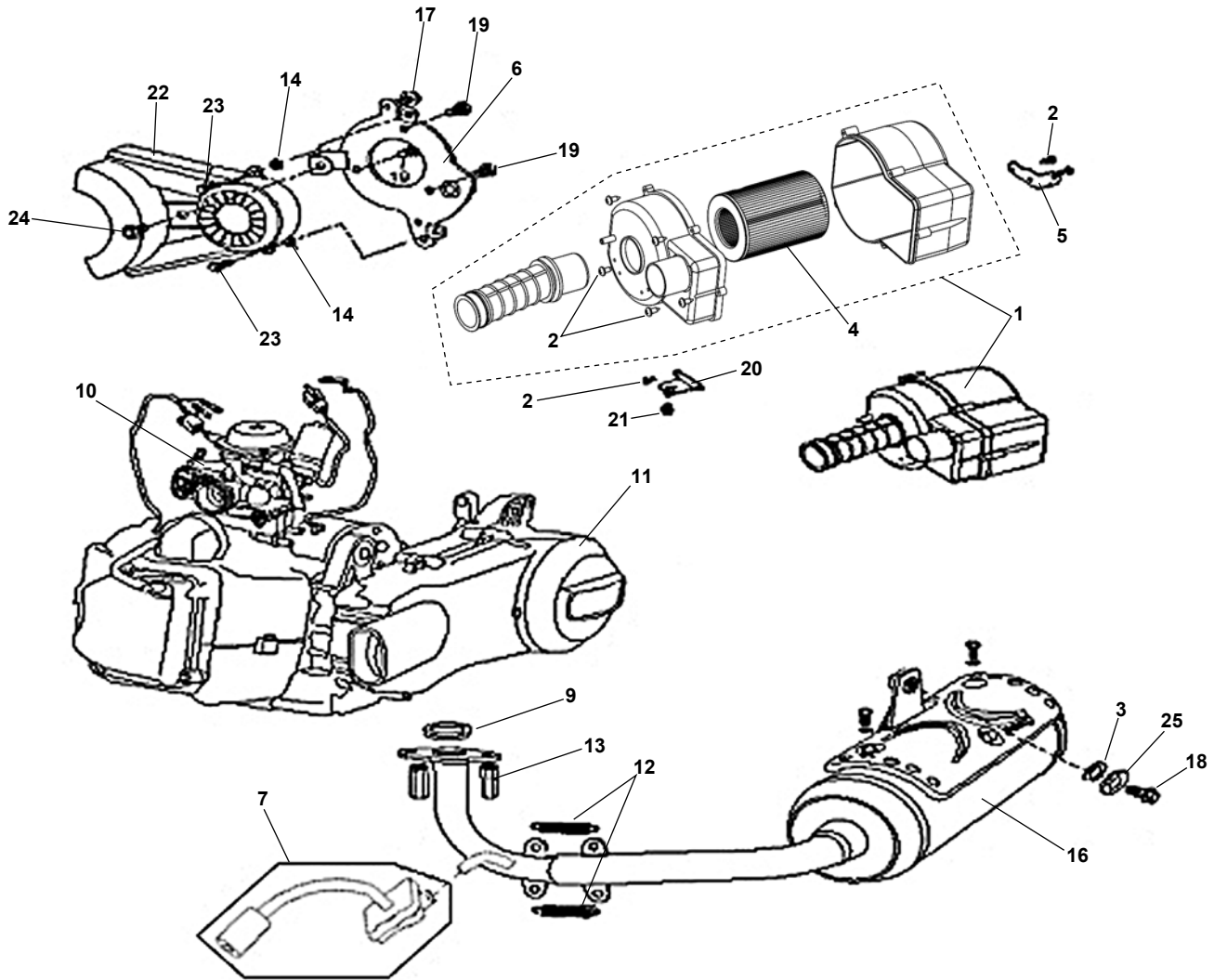
7151 SECTION 20 REAR SWINGARM ASSEMBLY



Ref#	Part#	Description	Qty
1	14324	NUT, M12 X 1.25 LOCKING FLANGE DAC	1
2	14710	WASHER - CHAIN ADJUSTER	2
3	14467	BUSHING, ENGINE ADJ ISOLATOR - 150CC	1
4	14468	SPACER, ENGINE ADJ CUP - 150CC	1
5	14469	SPACER, ENGINE ADJ ALIGNMENT - 150CC	1
6	14188	GASKET, BATTERY CAP - 150CC	1
7	14492	NUT, M12 X 1.25 HEX DAC	1
8	14470	LINK, CHAIN TENSIONING - 150CC	1
9	14243	NUT, M10 X 1.25 LOCKING FLANGE DAC	1
10	14446	BOLT, M10 X 1.25 X 45 FHCS DAC	1
11	14471	SPACER, ENGINE MOUNTING LINK - 150CC	1
12	14405-48	ASM, REAR SWINGARM - 6150 CHARCOAL	1
13	14431	BOLT, M6 X 1.00 X 60 FHCS DAC	2
14	14172	COVER, ELECTRICAL - 6150/7150	1
15	14246	BOLT, M10 X 1.25 X 40 FHCS DAC	4
16	14243	NUT, M10 X 1.25 LOCKING FLANGE DAC	5
17	14535	SHOCK, REAR - 6150	2

Ref#	Part#	Description	Qty
18	14324	NUT, M12 X 1.25 LOCKING FLANGE DAC	2
19	14191	BUSHING, SWINGARM ISOLATOR - 150CC	2
20	14452	BOLT, M12 X 1.25 X 60 FHCS ZN	2
21	14372	BOLT, M6 X 1 X 16 FHCS DAC	4
22	14185	GUARD, LOWER CHAIN - 150CC	1
23	14189	BATTERY - GTX9-BS	1
24	14186	COVER, BATTERY - 150CC	1
25	14177	SPANNER, ENGINE MOUNT	1
26	14449	BOLT, M10 X 1.25 X 195 HHCS DAC	1
27	14187	STRAP, BATTERY HOLD DOWN - 150CC	1
28	15322	FENDER, REAR-MATTE BLACK - 6152	2
29	14236	NUT, M6 X 1.00 NYLOC FLANGE DAC	6
30	14181	BRACKET, RH REAR FENDER	1
31	14179	BRACKET, LH REAR FENDER	1
32	14247	BOLT, M8 X 1.25 X 45 FHCS DAC	2
33	14820	BOLT, M6 X 1.00 X 14 FHCS SS	6

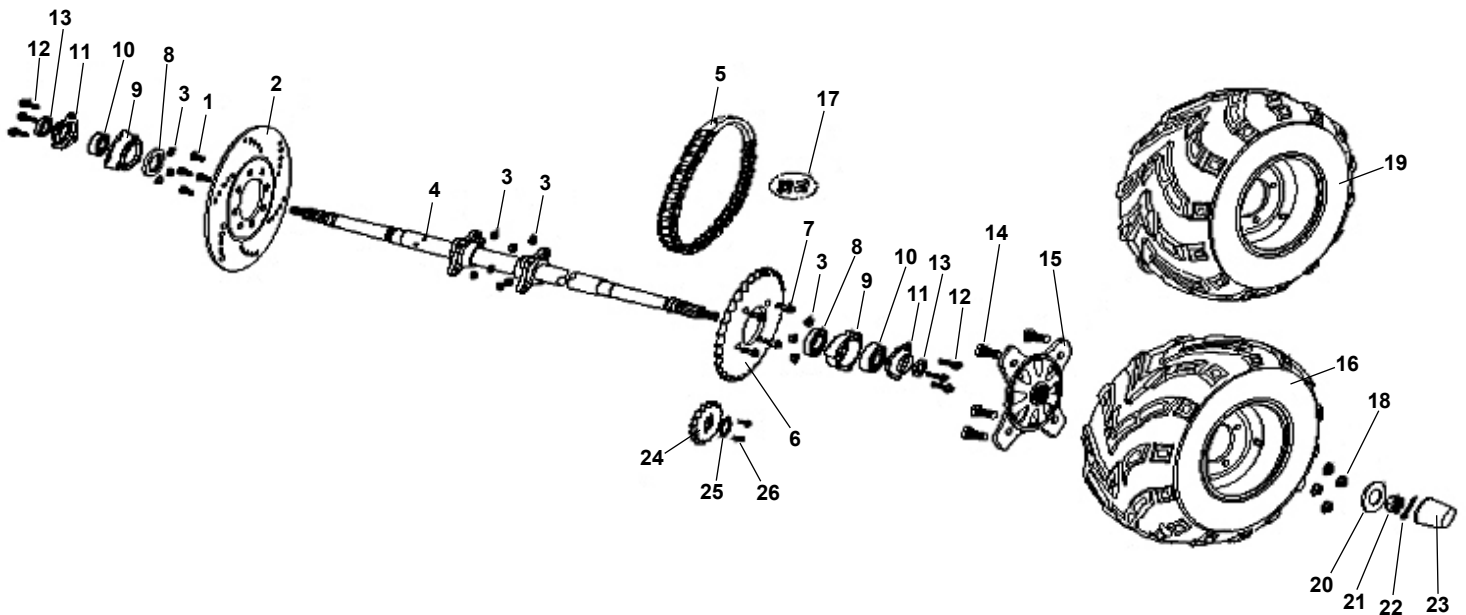
7151 SECTION 21 ENGINE / MUFFLER / AIR CLEANER



Ref#	Part#	Description	Qty
1	14192	ASM, AIR CLEANER - 150CC	1
2	14423	SCREW, M5 X 16 PHSM ZN	9
3	14495	WASHER, M8 SPLIT LOCK ZN	1
4	14194	FILTER, AIR - 150CC	1
5	14201	BRACKET, #2 AIR CLEANER MNT - 6150/7150	1
6	14480	BRACKET, REAR ENG MOUNT - 150CC	1
7	14762	AIR INJECTION ASM, MUFFLER - 6150/7150	1
8	14481	CLAMP, HOSE 45MM (not shown)	1
9	14196	GASKET, EX PIPE - 150CC	1
10	14925	ASM, CARBURETOR 150CC	1
11	15332	ASM, ENGINE-150CC-615X/7150 - SEE SPECS	1
12	14482	SPRING, EXHAUST PIPE - 150CC	2

Ref#	Part#	Description	Qty
13	50050	NUT (HEX) CAP M6	2
14	14236	NUT, M6 X 1.00 NYLOC FLANGE ZN	2
16	14760	ASM, MUFFLER W/ AIR INJ MOUNT-6150/7150	1
17	14433	BOLT, M8 X 1.25 X 15 FHCS ZN	3
18	14439	BOLT, M8 X 1.25 X 40 FHCS ZN	1
19	14239	BOLT, M8 X 1.25 X 20 FHCS ZN	3
20	14200	BRACKET, #1 AIR CLEANER MNT - 6150/7150	1
21	14445	BOLT, M10 X 1.25 X 10 FHCS ZN	1
22	14484	GUARD, CHAIN - 150CC	1
23	14426	BOLT, M6 X 1.00 X 14 FHCS ZN	2
24	14434	BOLT, M8 X 1.25 X 16 FHCS ZN	1
25	14497	WASHER, M8 X 27 X 2 FLAT ZN	1

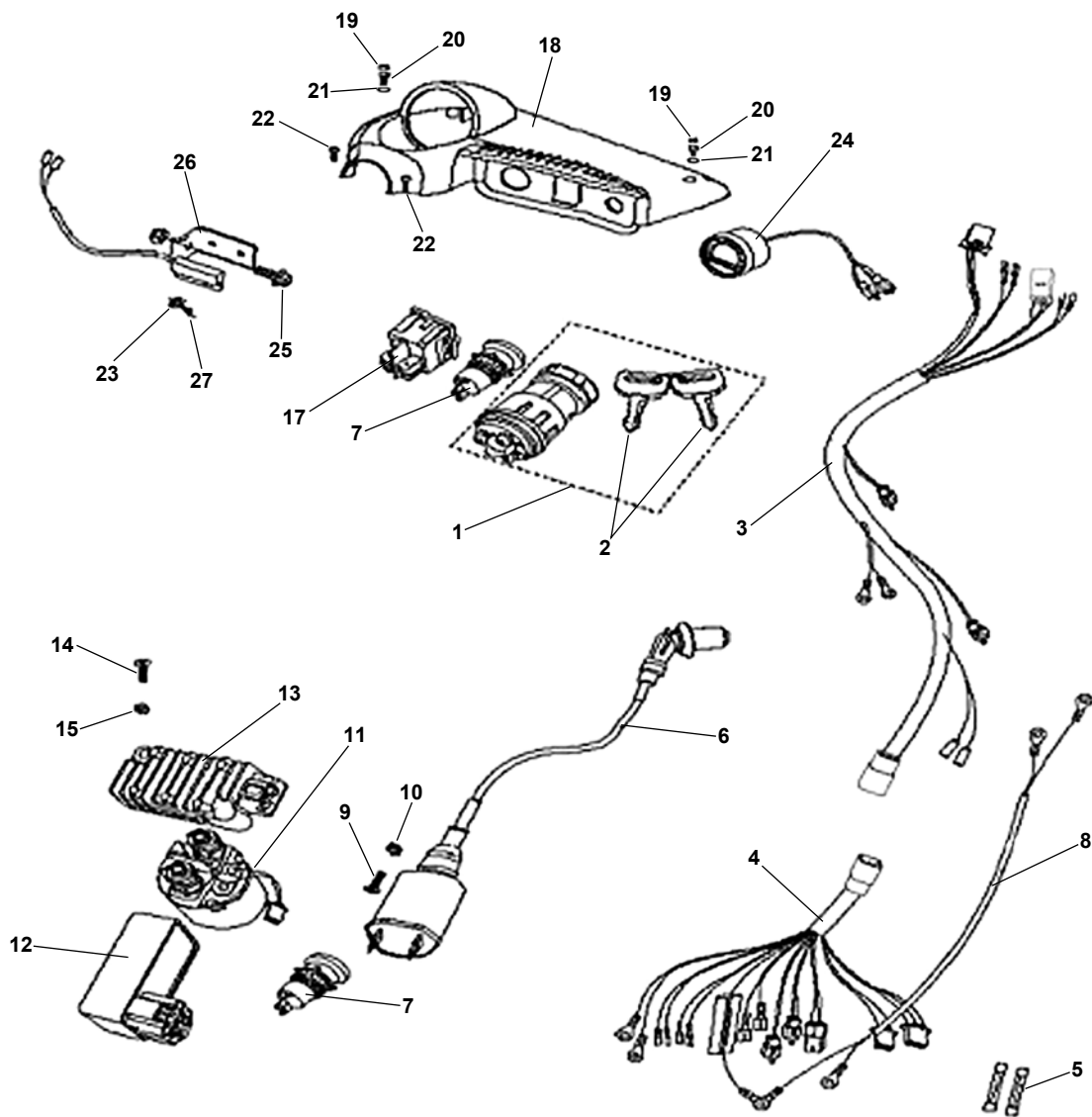
7151 SECTION 22 REAR AXLE



Ref#	Part#	Description	Qty
1	14435	BOLT, M8 X 1.25 X 22 FHCS ZN	4
2	14202	DISC, 8.75 REAR BRAKE - 6150/7150	1
3	14088	NUT, M8 X 1.25 LOCKING FLANGE ZN	16
4	14816	AXLE, TAPERED END - 200 SERIES	1
5	14204	CHAIN 50 X 52P INC ML	1
6	14205	SPROCKET, 50P 32T - 6150/7150	1
7	14436	BOLT, M8 X 1.25 X 25 FHCS ZN	4
8	14206	SEAL, M50 X 34 X 7 DUST	2
9	14207	HOUSING, AXLE BRG - 6150/7150	2
10	14208	BEARING - 6206	2
11	14209	FLANGE, BEARING - 6150/7150	2
12	14439	BOLT, M8 X 1.25 X 40 FHCS ZN	6
13	14210	SEAL, M42 X 30 X 7 DUST	2
14	14147	STUD, M10 X 1.25 X 31 WHEEL	8

Ref#	Part#	Description	Qty
15	15013	HUB, TAPERED 150CC - 4-110MM	2
16	14398	ASM, TIRE/WHL LR FAR EAST-6150	1
17	14215	MASTER LINK, 50	1
18	13979	NUT, M10 X 1.25 WF DAC	8
19	14399	ASM, TIRE/WHL RR FAR EAST-6150	1
20	14248	SPACER, M16 X 16 X 4	2
21	14249	NUT, M16 X 2.00 CASTLE	2
22	14213	PIN, M4 X 30 COTTER	2
23	14151	CAP, HUB NOSE - BLACK RUBBER	2
24	14217	SPROCKET, 50P 16T - 6150/7150	1
25	14218	KEEPER, SPROCKET - 6150/7150	1
26	14296	BOLT, M6 X 1.00 X 12 FHCS ZN	2
27	14752	TIRE, 18 X 9.5-8 FAR EAST	1
28	14756	WHEEL, 8 X 4.75 4-110MM, SILVER	2

7151 SECTION 23 ELECTRICAL



Ref#	Part#	Description	Qty
1	14222	SWITCH, KEYPED IGNITION W/KEY - 6150/7150	1
2	14588	KEY SET - 6150/7150	1
3	15549	HARNES, MAIN WIRING - 7151	1
4	14740	HARNES, SWINGARM WIRING - 7150	1
5	14231	FUSE, 15AMP - WAYTEK 46115	2
6	14227	COIL, IGNITION W/CAP - 6150/7150	1
7	14221	SWITCH, ENGINE STOP - 6150/7150	2
8	14486	HARNES, BATTERY - 150CC	1
9	14425	BOLT, M5 X .75 X 25 PHMS ZN	1
10	14491	NUT, M5 X .75 NYLOC ZN	1
11	14225	RELAY, STARTER - 6150/7150	1
12	14226	CDI - 6150/7150	1
13	14572	CDI, 20MPH REV LIMITED-150CC	1
13	14818	REGULATOR, VOLTAGE - 150CC	1

Ref#	Part#	Description	Qty
14	14428	SCREW, M6 X 1.00 X 20 PHMS ZN	2
15	14236	NUT, M6 X 1.00 NYLOC FLANGE ZN	8
16	15086	LIGHT, ROUND 3-1/2" - 25W (not shown)	2
17	14220	SWITCH, HEADLIGHT	1
18	14219	PANEL, DASH - 7150	1
19	14487	COVER, DECORATIVE DASH BOLT - 7150	4
20	14418	SCREW, M4 X .75 X 10 PHMS ZN	4
21	14238	WASHER, M6 SPLIT LOCK ZN	4
22	14419	SCREW, M4 X .75 X 20 PHMS ZN	1
23	14488	MAGNET, SPEED SENSOR - 7150	1
24	14228	SPEEDOMETER - 7150	1
25	14426	BOLT, M6 X 1.00 X 14 FHCS ZN	1
26	14229	BRACKET, SPEEDO SENSOR - 7150	1
27	14557	SCREW, M3 X 8 PAN HEAD	1



4404 Engle Ridge Drive
Fort Wayne IN 46804

62194 Commercial Street
Roseland, LA 70456

Toll Free 800-643-7332
Fax 866-329-5278
www.amsportworks.com